

E. 40' Rd R/W
DB 969-263

E. 15' DB. 969-263

OVERLOOK Rd

E. 40' Rd R/W
DB 969-263

Palm Beach County (County) makes no representation or warranties whatsoever on the attached / enclosed information reflected herein pertaining to easements, rights-of-way, setback lines, reservations, agreements, and other similar matters. The information provided herein should not be relied upon by the requesting party to confirm the existence / non-existence of facts contained herein.

RESOLUTION R-85-2083
BOARD OF C.C. ACCEPTANCE MAINTENANCE OF THE ROADS OF PLAT OF SUNNY HILLS HOMESITES: 1-15-86

E. 15' of 40' Rd R/W & Portion of DB 15-33 AAC created as D.B. 800-70

40' Ded. by Plat
Ridge Grove All #1
PB 22-43

Ridge Grove
PB 22-8

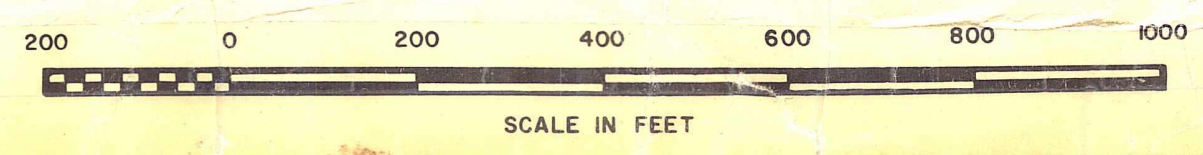
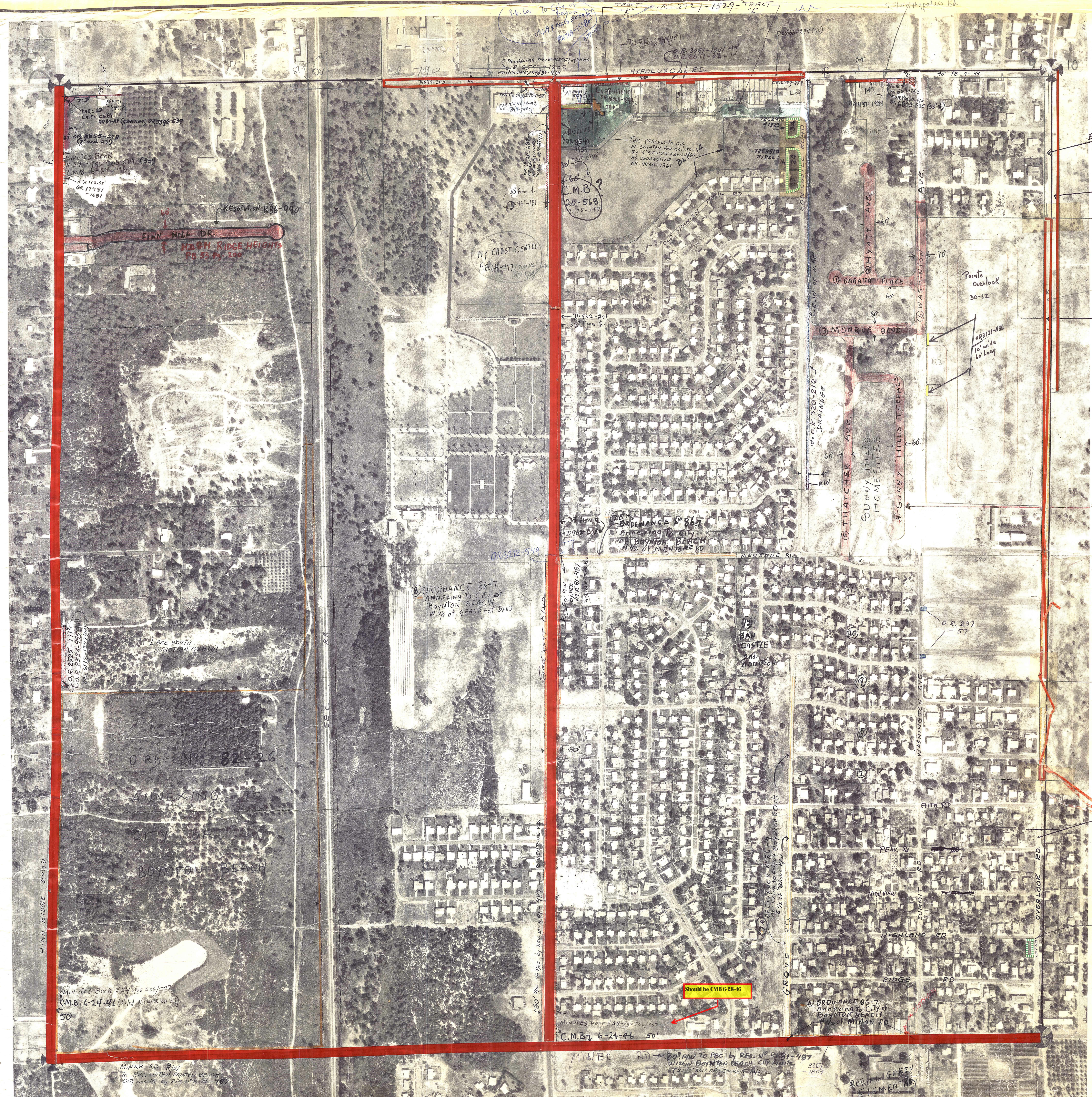
NOTE:
NOT TO BE REPRODUCED IN ANY FORM EXCEPT BY EXPRESS WRITTEN CONSENT FROM THE PALM BEACH COUNTY ASSESSOR.

Information shown hereon is compiled from the best available sources and CANNOT be used for surveys or land transfers of any type.

PALM BEACH COUNTY
537
DAVID L. REID
County Assessor

| RGE | TWP | SEC | AERIAL |
|-----|-----|-----|----------|
| 43 | 45 | 9 | No. 1145 |

SCALE: 1"=200'



Aerial Photo Date — 10-23-70

BLACKWELL, OVEH & ANDERSON ENGINEERS INC.
ENGINEERS, PLANNERS, SURVEYORS
WEST PALM BEACH, FLORIDA