

Australian Ave is a limited access facility from Southern Blvd north to 1000' north of Okeechobee Blvd per Resolution R72-304

X = Centrepark Blvd entrance on Australian - Permit # RW-204-1086 (on film)

Z = R84-1746 Approving settlement & Authorizing partial abandonment of limited access facility Permit RW-208-1084 (on film)

SE 01 PALM ESTATES	P.B. 26 - PG. 52
SW 02 BELVEDERE HEIGHTS	P.B. 24 - PG. 163
SW 03 CASTLES CONGRESS AVE ADD UNREC AM 32	
SW 04 ELEANOR PARK	P.B. 22 - PG. 60
NW 05 MADRID PARK REPL.	P.B. 20 - PG. 20
NW 06 SMITHVIEW	P.B. 23 - PG. 113
SE 07 AIRPORT INDUST. PARK	P.B. 28 - PG. 207
NW 08 LATHAM WAREHOUSE CONDO NO. 1	
SE 09 BOUNDARY OF AIRPORT INDUSTRIAL PARK (1980) PB 38 P 5	
SE 10 AIRPORT INDUSTRIAL PARK PLAT 1 (1980)	
SE 11 PALM BEACH INTERNATIONAL AIRPORT CENTER (1980) PB 46 P 25	
NE 12 OAK RIDGE BUSINESS PARK COND (1985) P 5	
SE 13 CENTREPARK PL 1 @ PB 57 P 30	
SE 14 AIRPORT INDUSTRIAL PARK BNDRY PL 2 (89) PB 61 P 150	
SE 15 COMMERCE POINTE/HOTEL SUB (90) PB 64 P 141	

NOTES

AUSTRALIAN AVE. 100' RW; SEE C.M.S. JUL 1993 CERT. 1149 (PA 300)

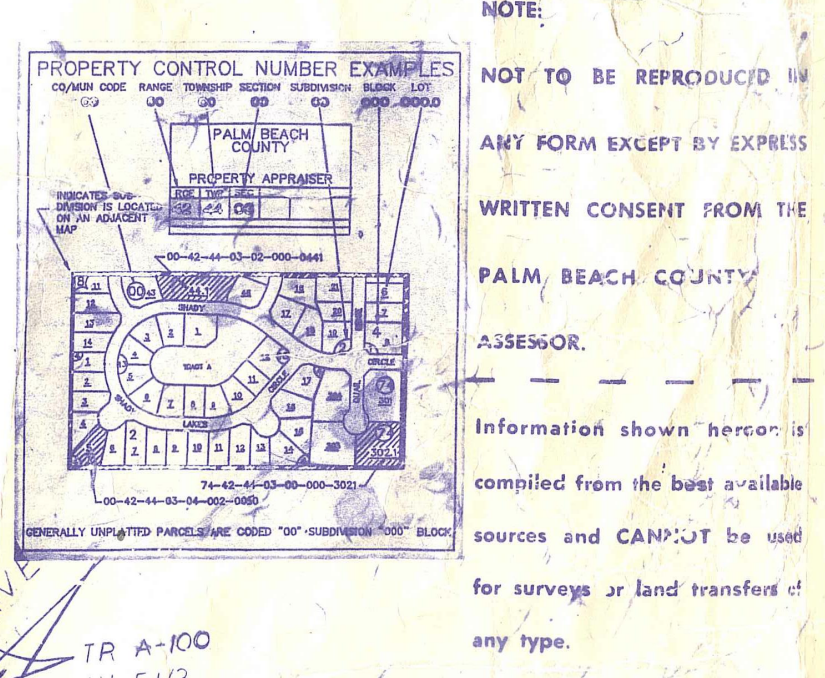
SEE ALSO RES. NO. 72-304 DESIGNATING AUST. AVE. AS A LIMITED ACCESS HIGHWAY FROM SOUTHERN BLVD TO 1000' NORTH OF OKEECHOBEE.

CONGRESS AV. REQUIREMENT: 100' RW FROM BELVEDERE TO OKEECHOBEE DETERMINED BY OR 99-553 BY THE SECT. 29 1/2

W. DONNA RD; LATHAM RD; ROCKY DR; NORMAN DR. ALL ARE PRIVATE ROADS AS PER OR. 102-21-1454

AUSTRALIAN: SOUTH CITY LIMITS TO 45th ST. BELVEDERE: FROM FLA MANGO TO DULLE AVE (CENTREPARK) TO 45th ST. SEE RES. 85-1027. PARK AGREEMENT SIGN. P.B.C. & CITY OF W.P.B. TO TRANSFER TO COUNTY ENGINEERING SERVICES AND RESPONSIBILITIES WITHIN THE MUNICIPAL BOUNDARIES OF CITY.

L2 CANAL: CO. OWNED PER ORB. 69, FROM AUST. AVE. TO MERCER AVE. PG. 344, REF. P.B. 57, PG. 150 P.B. 66, PG. 51



Palm Beach County (County) makes no representation or warranties whatsoever on the attached / enclosed information reflected herein pertaining to easements, rights-of-way, setback lines, reservations, agreements, and other similar matters. The information provided herein should not be relied upon by the requesting party to confirm the existence / non-existence of facts contained herein.

County has received a bill of sale from Robert Assoc. for all site water facilities in Florida Mango & Belvedere Rd - 35, 42, 63 - 1957

PALM BEACH COUNTY
GARY R. NIKOLITS
 PROPERTY APPRAISER

43	43	29	NOV 2014
SCALE	1" = 200'	DATE	01/25/14