

Palm Beach County (County) makes no representation or warrants whatsoever on the attached / enclosed information reflected herein pertaining to easements, rights-of-way, setback lines, reservations, agreements, and other similar matters. The information provided herein should not be relied upon by the requesting party to confirm the existence / non-existence of facts contained herein.

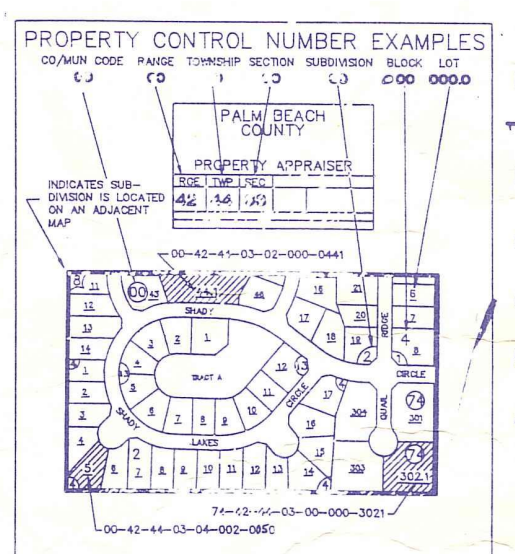
- SE 01 ROOSEVELT EST REPL TR "E" PB26-P6194
- SW 03 FLAMING WATERS COUNTRY CLUB PB26-P6239
- SW 04 PB29-P621
- SW 05 PALM BEACH LAKES COMMERCIAL PB29-P663
- NW06 PRESIDENT CONDO ONE
- NW07 THE PRESIDENT COUNTRY CLUB NO.1 PB29-P672
- NW08 NO.2 PB29-P6113
- NW09 PRESIDENT CONDO NO.2
- NW10 PRESIDENT CONDO NO.3
- W1/2 11 YORKTOWN CONDO
- NW12 PRESIDENT CONDO NO.4
- NW13 REPLAT OF PT. OF LOT 10 AND ALL OF LOTS 11, 12, 13 OF PRESIDENT COUNTRY CLUB I PB30-P64
- NW14 PRESIDENT CONDO NO.5
- NW15 JAMESTOWN CONDO
- SW16 GEORGETOWN CONDO
- SW17 LANDS OF THE PRESIDENT CONDO NO.6
- SE05 ROOSEVELT EST. REPL. CODED SEC. 16 PB26-P677
- SE07 9 PB25-P6204
- NW18 EMBASSY PARK CONDO 1980
- NW19 EMBASSY PARK WEST 1979 PB35-P694
- NW20 PRESIDENTIAL MEDICAL PLAZA CONDO 80
- NW21 THE CONSULATE CONDO (1984)
- NW22 VISTA DEL LAGO CONDO (1984) (1985)
- W23 BARRISTERS BLDG CONDO (83)
- NW24 LAKESHORE PLAZA CONDO (82)

(ALL OF SEC. IN W.P.B. 74)

SUB 07 IS CODED IN SEC 9-43-43

NOTE:
NOT TO BE REPRODUCED IN ANY FORM EXCEPT BY EXPRESS WRITTEN CONSENT FROM THE PALM BEACH COUNTY PROPERTY APPRAISER

Information shown hereon is compiled from the best available sources and CANNOT be used for surveys or land transfers of any type.



D-17

PALM BEACH COUNTY
GARY R. NIKOLITS
PROPERTY APPRAISER

RGE	TWP	SEC	AERIAL
43	43	17	NO 07-84
SCALE			1" = 200'
DRAWN BY			ED KESHIAN 6-17-76
UPDATED			

36	31	32	33	34	35	36	37
1	8	9	10	11	12	13	14
15	16	17	18	19	20	21	22
23	24	25	26	27	28	29	30
31	32	33	34	35	36	37	38
39	40	41	42	43	44	45	46

SUB 05 IS CODED IN SEC. 16-43-43

SUB 05 CODED IN SEC 16

SUB 07 CODED IN 43-43-09

SEE NOTES IN SECT. 17-43-43

SEE NOTES IN SECT. 19-43-43