

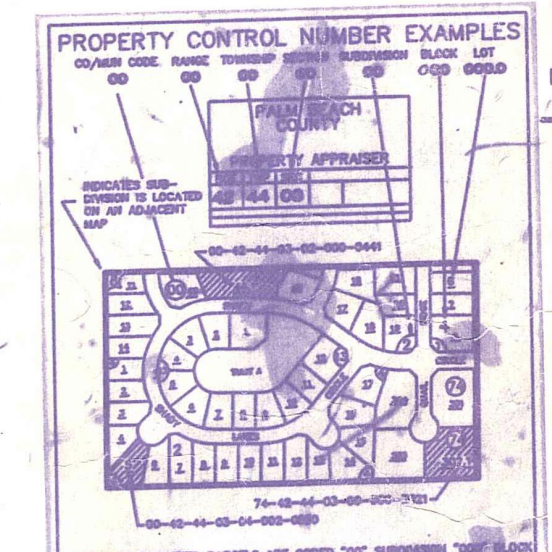
Palm Beach County (County) makes no representation or warranties whatsoever on the attached / enclosed information reflected herein pertaining to easements, rights-of-way, setback lines, reservations, agreements, and other similar matters. The information provided herein should not be relied upon by the requesting party to confirm the existence / non-existence of facts contained herein.

- SW 01 ELTON SUB-AM-1
- SW 02 GOOLSBY SUB-AM-44
- N 03 P.B. GARDENS ESTS. PL. 1 PB26P188 (52)
- N 04 CITY OF P.B. GARDENS, PL.3 PB27P23 (52)
- SW 05 ROAN COURT PB29P40
- SW 06 ROAN LANE CONDO (75)
- SW 07 ELMWOOD ESTATES PB31P200 (77) (C)
- SW 08 OCTOBER PARK PB32P24 (77) (C)
- SW 09 ELMWOOD ESTATES REPL. PARCEL A PB32P26
- SW 10 ACACIA GARDENS TWINHS PB40P5 (81)
- SW 11 ODYSSEY CONDO (84)(85)
- SW 12 PARK LANE VILLAS PB48P35 (85)
- SW 13 NORTHLAKE BUSINESS PARK CONDO (88) (90)
- ★ SW 14 SUN TERRACE AT THE GARDENS (91) PB64P174
- S 1/2 15 LAKE CATHERINE (91) PB66 P24

Notes: ROAD JURISDICTION TRANSFERS:

- Northlake Blvd between I-95 & old Dixie transferred to state as per RST-1592. (Proposed) & to RAC as LETTER DATED 1-7-97
- PBC DISPOSED 150' IN WIDTH OF N. 116-453 LESS EAST 663' ON NORTHLAKE BLVD. SEE D. 116-453 & 100' IN WIDTH OF N. 116-453 IN EAST 663' SEE D. 916-459. ACROSS D. 915-194 & DISPOSED BY D. 916-458. D. 912-317.
- N. 91ST STREET, EAST OF SILVERTHORNE CONVEYED TO P.B.C. BY R/W W.D. BUT IS NOT COUNTY'S MAINT. RESPONSIBILITY. IT IS PROPERTY OWNERS. SEE FILE. 1-10-04

PT OF SLC IN COUNTY - (C)
PT OF SEC IN PALM BCH GARDENS - (52)

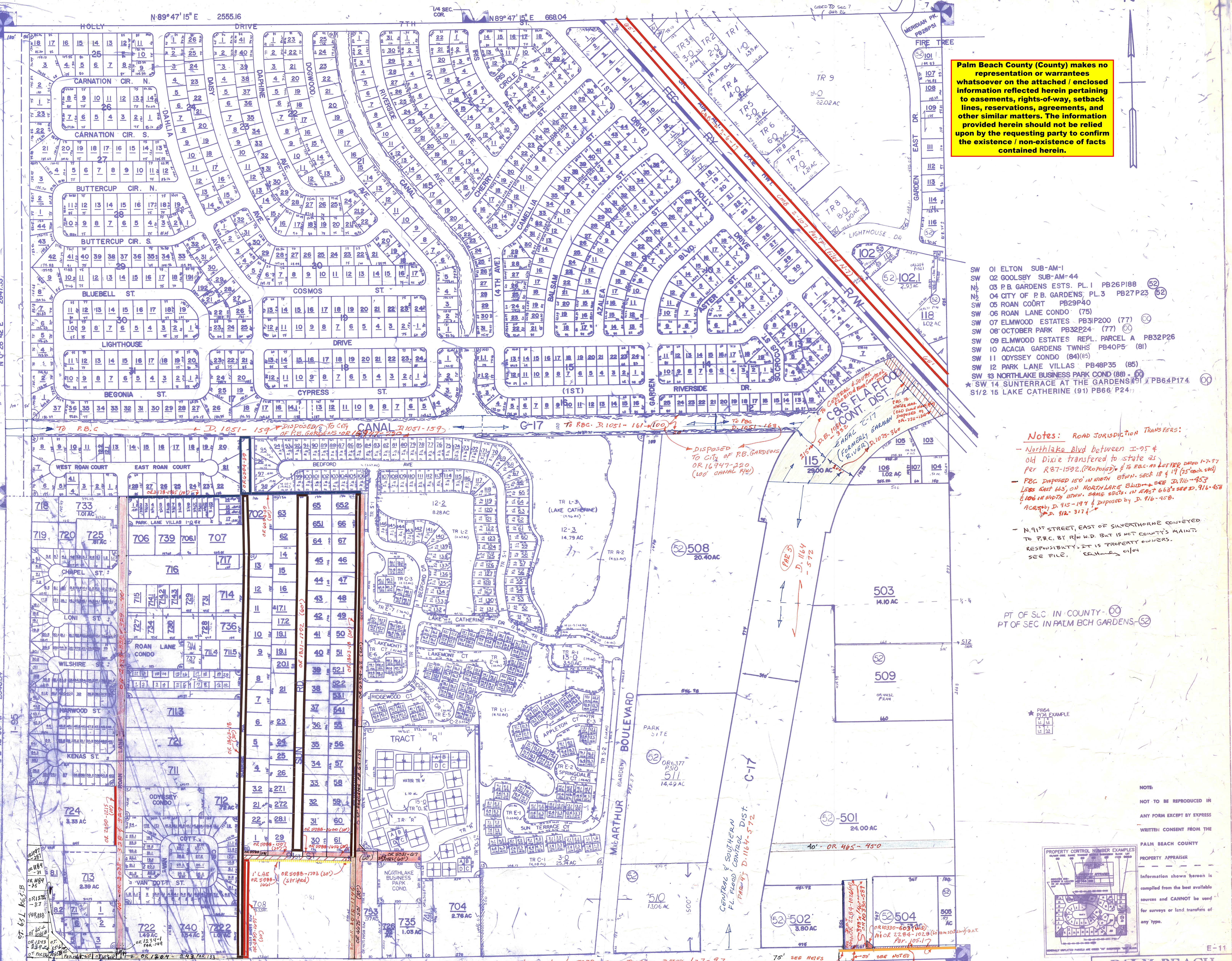


NOTE:
NOT TO BE REPRODUCED IN ANY FORM EXCEPT BY EXPRESS WRITTEN CONSENT FROM THE PALM BEACH COUNTY PROPERTY APPRAISER
Information shown hereon is compiled from the best available sources and CANNOT be used for surveys or land transfers of any type.

PALM BEACH COUNTY
N-12
PROPERTY APPRAISER

36	31	32	33	34	35	36	31
1	2	3	4	5	6	7	8
12	13	14	15	16	17	18	19
20	21	22	23	24	25	26	27
28	29	30	31	32	33	34	35
36	37	38	39	40	41	42	43
44	45	46	47	48	49	50	51
52	53	54	55	56	57	58	59
60	61	62	63	64	65	66	67
68	69	70	71	72	73	74	75
76	77	78	79	80	81	82	83
84	85	86	87	88	89	90	91
92	93	94	95	96	97	98	99
100	101	102	103	104	105	106	107

RGE	TWP	SEC	AERIAL
43	42	18	NO
SCALE	1" = 200'		
DRAWN BY	M. RUBIERA		
UPDATED	7/12/92		



SR 850
See Notes & Letter from Traffic dated 1-7-97
75' see notes
OR 2284-1014
OR 100-1 = 36x10'
OR 10330-589
70' from sec. line