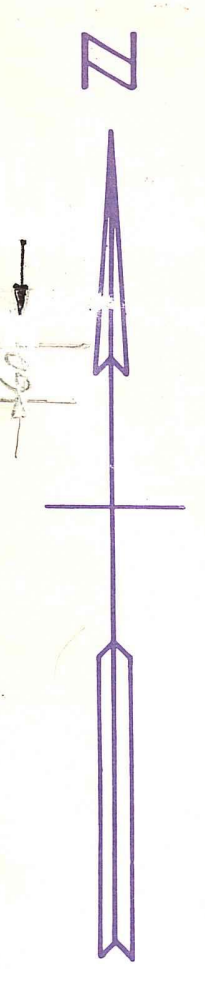


DB 692-60 - ALL OF BLK. 73 EXCEPT TR. 3, 7, 9, 13 & 14
 DB 692-62 - TR. 3, 7, 9, 13 & 14 ONLY



Palm Beach County (County) makes no representation or warranties whatsoever on the attached / enclosed information reflected herein pertaining to easements, rights-of-way, setback lines, reservations, agreements, and other similar matters. The information provided herein should not be relied upon by the requesting party to confirm the existence / non-existence of facts contained herein.

WEST PENINSULAR TITLE COMPANY vs. PALM BEACH COUNTY - SEE OR 5608-1286, ATTACHED TO PALM BEACH FARMS CO. PL. NO. 3 MAP; FOR ROAD R/W IN BLK 73.

NOTE: 30' RW PLATTED BYWN. TR 81-83 & TR 110-12 TO RBC AS PER O.R. 13682-90

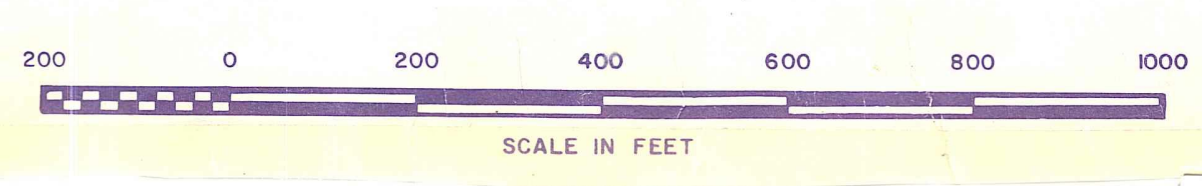
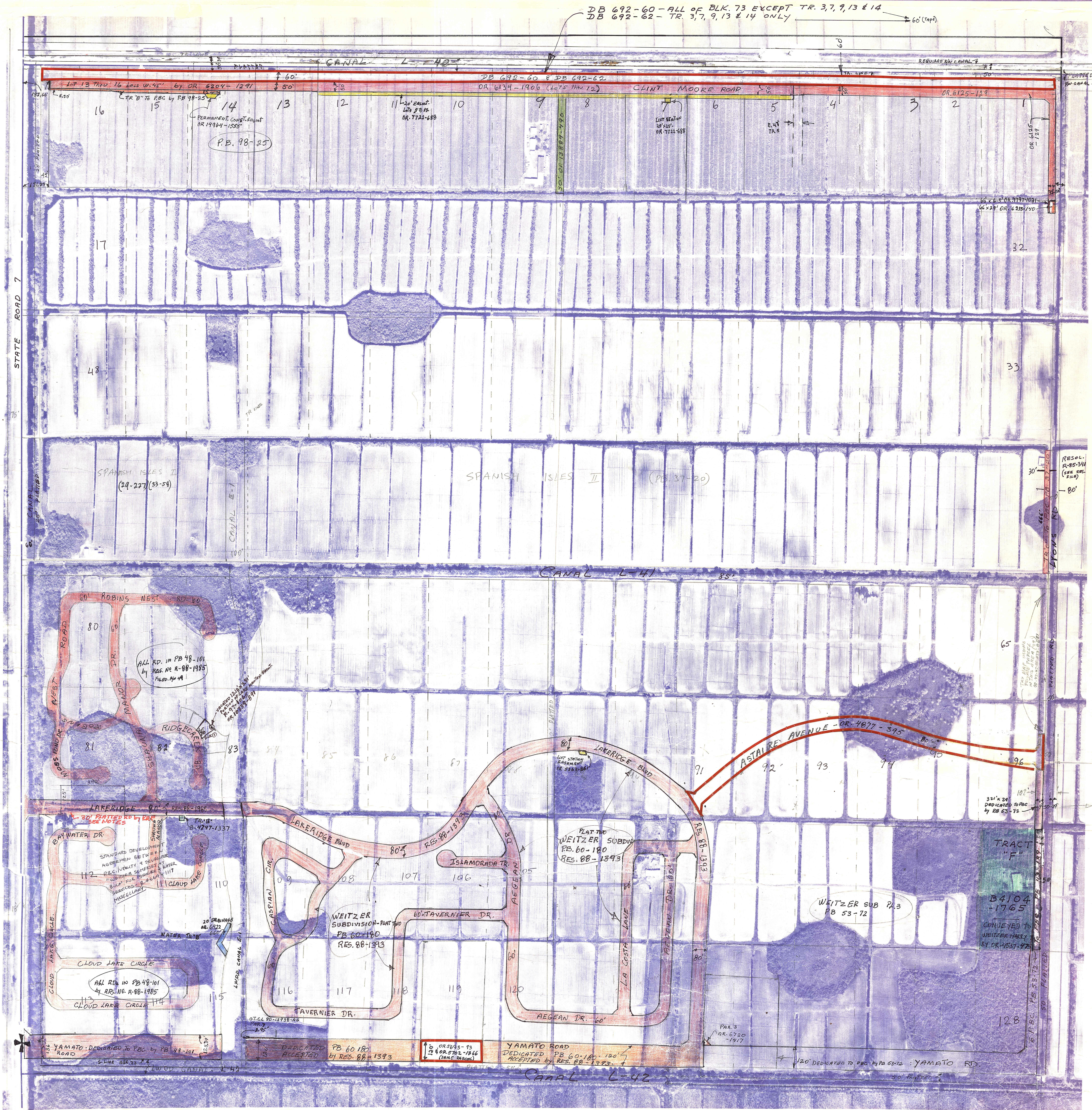
50' PLATTED PLW FOR "LYONS RD." AND PROBABLE ADDITIONAL 20' EACH SIDE FOR SAME (SEE PL. NO. 43-181) & PB 53-72

NOTE:
 NOT TO BE REPRODUCED IN ANY FORM EXCEPT BY EXPRESS WRITTEN CONSENT FROM THE PALM BEACH COUNTY TAX ASSESSOR.

Information shown hereon is compiled from the best available sources and CANNOT be used for surveys or land transfers of any type.

PALM BEACH COUNTY

| | | |
|--------|------|------|
| Sec. 6 | 5.49 | |
| Block | TWP | RGE. |
| 731 | 47 | 42 |



Aerial Photo Date - FEB. 14, 1968

MOCK ROOSE & SEARCY ENGINEERS