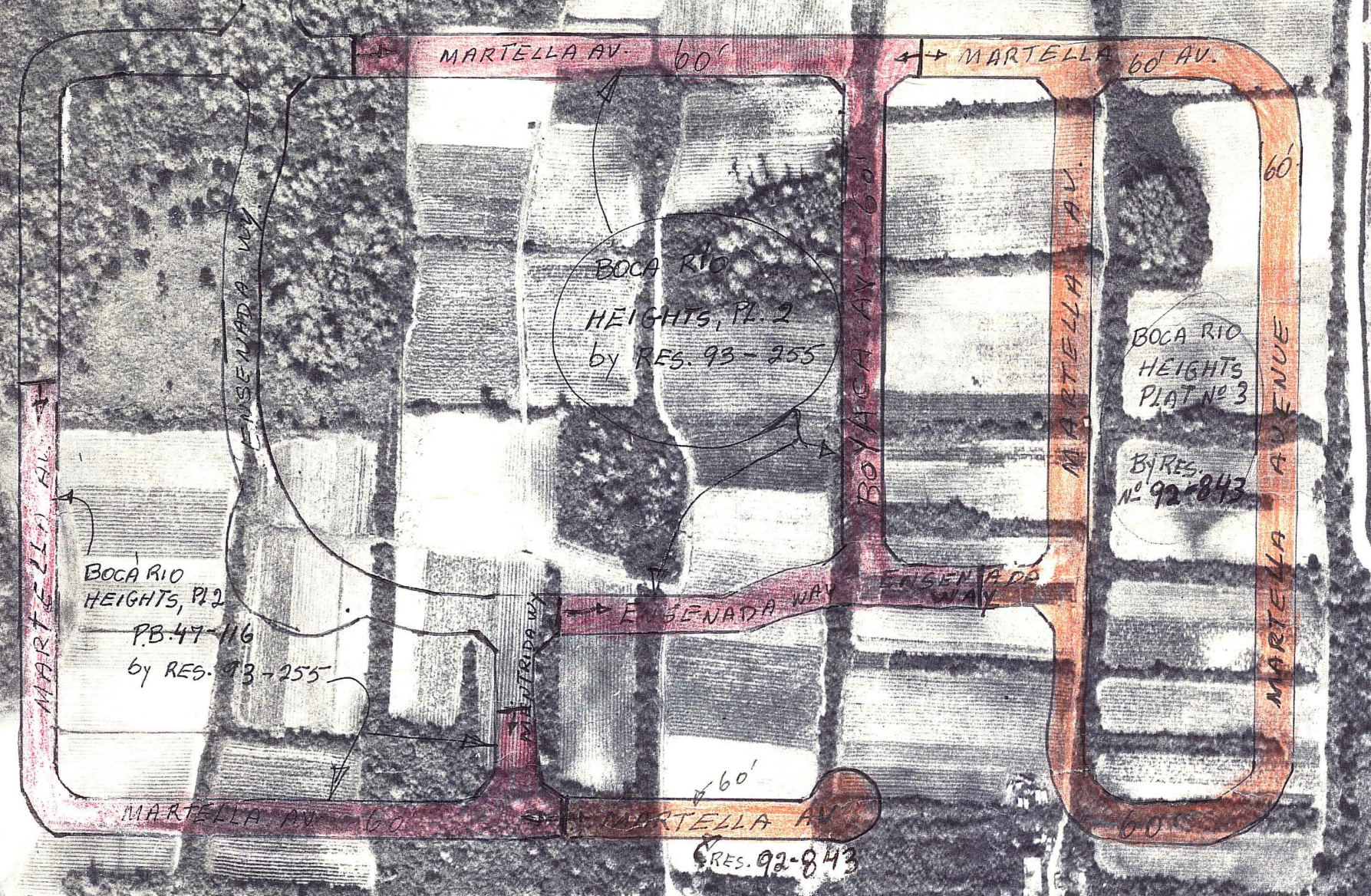


FOR AGREEMENT IN THIS PARCEL # 103
BROW P.B. # 103 SEE OR 10547-1754
SEE P. 103
P.B. TO 103
OR 10247-103

10' X 1015' - PAR. # 104
AGREEMENT B/W P.B.C. & R.W.B.
OR 10547-1754
& EASEMENT OVER (CROSS) PARCEL
P.B. TO 103 OR 10247-1848

TRACT 9
BUSA 834 IN
R50-1390
PARK
LEASE
59
REDEVELOPMENT



AGREEMENT BETWEEN DEVELOPER (THE VILLAGE AT LAKE BOCA RATON) AND THE COUNTY
FOR PROVIDING EASEMENT TO OWNER SERVICES



Palm Beach County (County) makes no representation or warranties whatsoever on the attached / enclosed information reflected herein pertaining to easements, rights-of-way, setback lines, reservations, agreements, and other similar matters. The information provided herein should not be relied upon by the requesting party to confirm the existence / non-existence of facts contained herein.

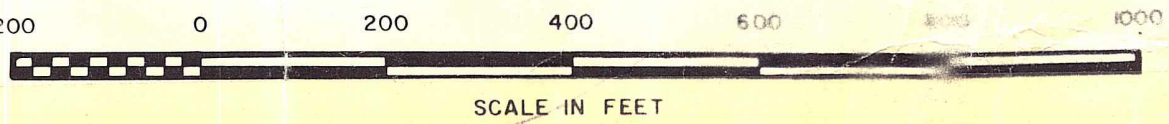
Resolution No. R-11-501
CHANGES NAME OF ROCK PIT RD.
TO BOCA RIO RD - MISCELLANEOUS

NOTE:
NOT TO BE REPRODUCED IN ANY FORM EXCEPT BY EXPRESS WRITTEN CONSENT FROM THE PALM BEACH COUNTY TAX ASSESSOR.
Information shown hereon is compiled from the best available sources and CANNOT be used for surveys or land transfers of any type.

PALM BEACH COUNTY

SEC. 29	552		
BLOCK	TWP.	RGE.	
80	47	42	
1" = 200' No 1040			

Aerial Photo Date - FEB. 14, 1968



MOCK, ROOSE & SEARCY Consulting Engineers