

**Palm Beach County (County) makes no representation or warranties whatsoever on the attached / enclosed information reflected herein pertaining to easements, rights-of-way, setback lines, reservations, agreements, and other similar matters. The information provided herein should not be relied upon by the requesting party to confirm the existence / non-existence of facts contained herein.**

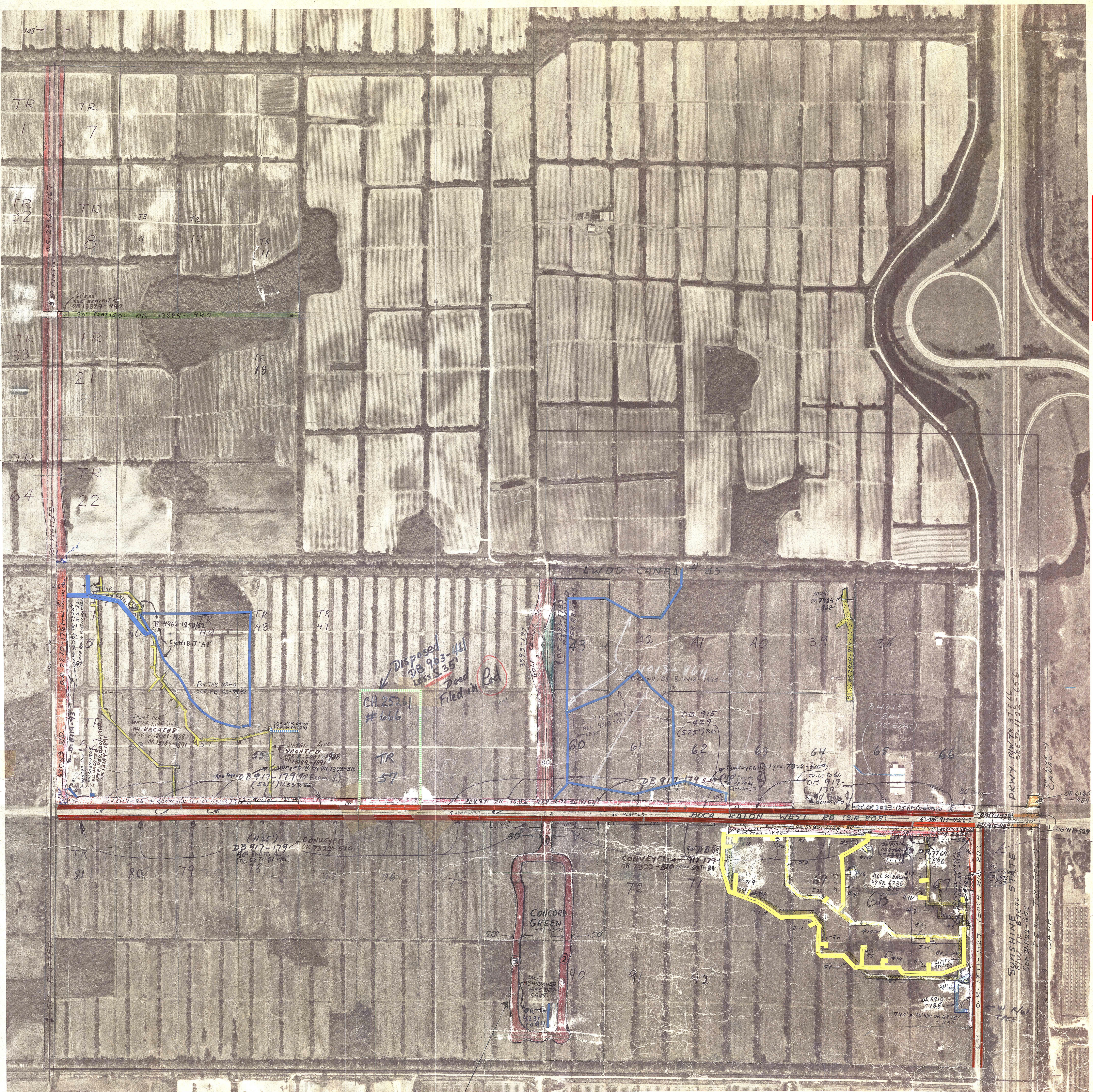
WEST PENINSULAR TITLE COMPANY  
 VS. PALM BEACH COUNTY: SEE  
 OR 5608-1284, ATTACHED TO  
 PALM BEACH FARMS CO. PL. N° 9  
 MAP, for RD. RW. IN B.M. 76.

B3582-719  
 TRACTS 56 THRU 63  
 N 27' OF 565'  
 B3519-96  
 TRS: 52 THRU 53

RESOL. NO R-71-501 CHANGES  
 THE ST. NAME OF ROCK PIT ROAD  
 TO BOCA RATON ROAD - MISCELLANEOUS  
 NOTE:

NOT TO BE REPRODUCED IN  
 ANY FORM EXCEPT BY EXPRESS  
 WRITTEN CONSENT FROM THE  
 PALM BEACH COUNTY TAX  
 ASSESSOR.  
 Information shown hereon is  
 compiled from the best available  
 sources and CANNOT be used  
 for surveys or land transfers of  
 any type.

PALM BEACH COUNTY		
5.49		
BLOCK	TWP	RGE
76	47	42
1"=200' N 17'		



CONCORD GREEN RESOLUTION R-85-885  
 ACCEPTING MAINTENANCE OF  
 ROAD: CONCORD GREEN CIRCLE  
 CONCORD GREEN EAST

SCALE IN FEET  
 0 200 400 600 800 1000

Aerial Photo Date - FEB. 14, 1968

MOCK ROOSE & SEARCH  
 Consulting Engineers  
 PHOTOGRAMMETRIC ENGINEERING BY