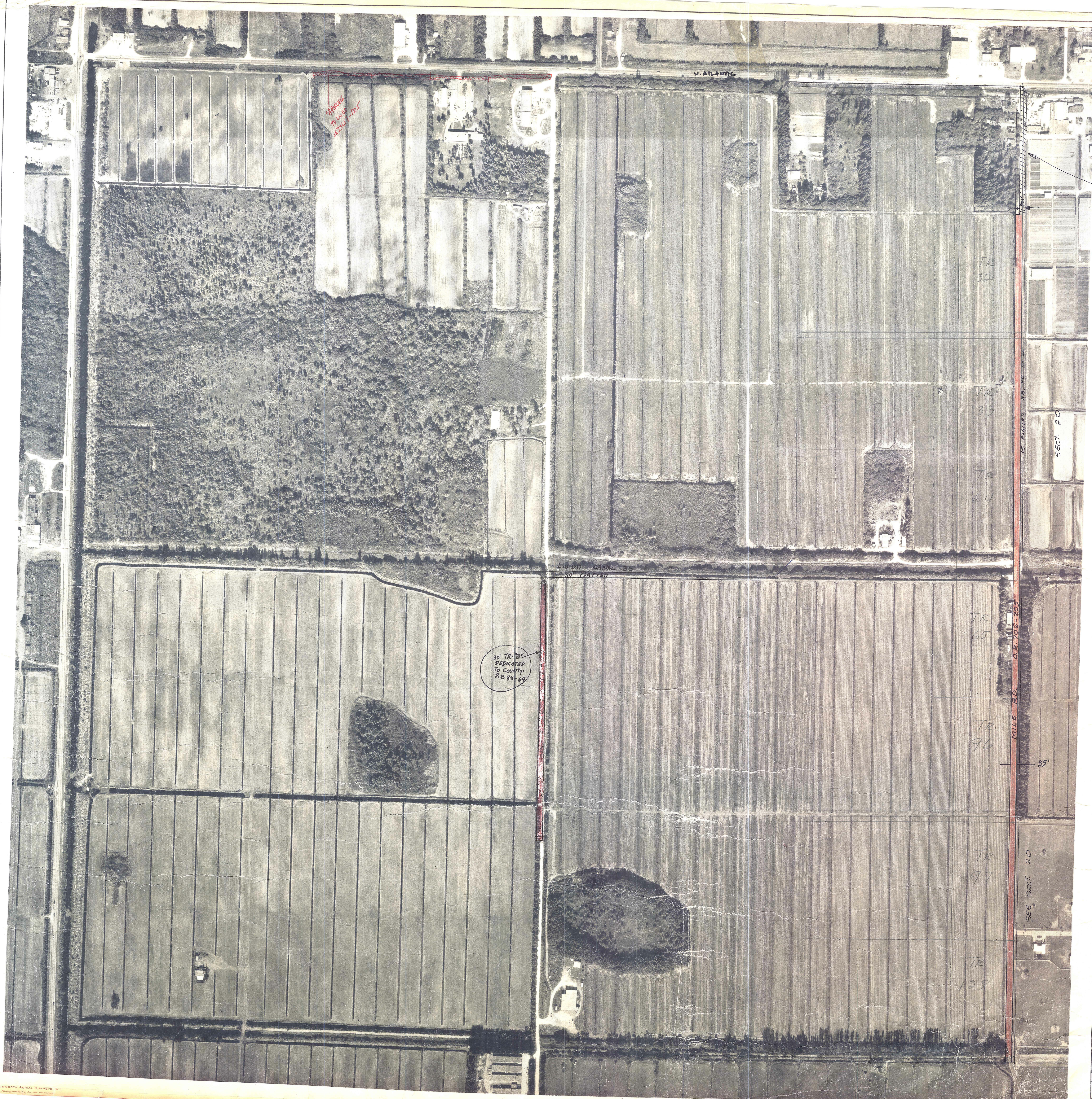




NOTE:
 FOR 30' PLATTED
 RW P.B.F.#1
 SEE MAINTENANCE
 RD. P.B.# Pgs 73 To 76
 DRAWING 3-73-211

Palm Beach County (County) makes no representation or warranties whatsoever on the attached / enclosed information reflected herein pertaining to easements, rights-of-way, setback lines, reservations, agreements, and other similar matters. The information provided herein should not be relied upon by the requesting party to confirm the existence / non-existence of facts contained herein.



NOTE:
 NOT TO BE REPRODUCED IN ANY FORM EXCEPT BY EXPRESS WRITTEN CONSENT FROM THE PALM BEACH COUNTY ASSESSOR.
 Information shown hereon is compiled from the best available sources and CANNOT be used for surveys or land transfers of any type.

PALM BEACH COUNTY
 540
 VID L. REID
 COUNTY ASSESSOR

RCE	TWP	SEC	AERIAL
42	46	19	NO 60-26

SCALE: 1"=200'
 DRAWN BY: _____
 IN-DATE: _____



FLIGHT DATE DEC. 1973