

Palm Beach County (County) makes no representation or warranties whatsoever on the attached / enclosed information reflected herein pertaining to easements, rights-of-way, setback lines, reservations, agreements, and other similar matters. The information provided herein should not be relied upon by the requesting party to confirm the existence / non-existence of facts contained herein.

- NE 02 CITY OF P.B. GARDENS PLAT NO. PB27P4
- NE 03 CITY OF P.B. GARDENS PLAT NO. 4 REPLAT (1978) PB32P186
- SW 04 GARDEN LAKES & GARDEN SQUARE SHOPS TOWNHOUSE TM 79-5 (1979) PB34 P139
- NE 05 WINCHESTER COURTS (1980) PB37P153
- NE 06 MIRAMAR TOWNHOMES (1980) PB38P107 TOWNHOUSE TM 80-65
- NE 07 EDGEWATER TOWNHOUSE (1981) TM81-4 PB39P2
- NE 08 BEAUMONT PLACE (1982) TWHS PB42P195
- NE 09 WINCHESTER COURTS, REPL (1989) PB 48P156
- NW 10 SABAL RIDGE (1989) PB 48P148
- NW 11 SABAL RIDGE CONDS (1985) (66)(87)
- SW 12 RCA BLVD CENTER (6) PB67P89 (2)
- SE 13 WEST PARK CENTER (6) PB67P91 (2)

*** NOTE:**
WINCHESTER CT TWHS (SUB 5) UNITS BLDGS 22-32
SEE ANNEX TO DEED OF PARTY FACILITIES OR 5089P205-227 FOR CHS IN UNIT CONFIGURATION

SEE SECTION 43-42-6

Notes:

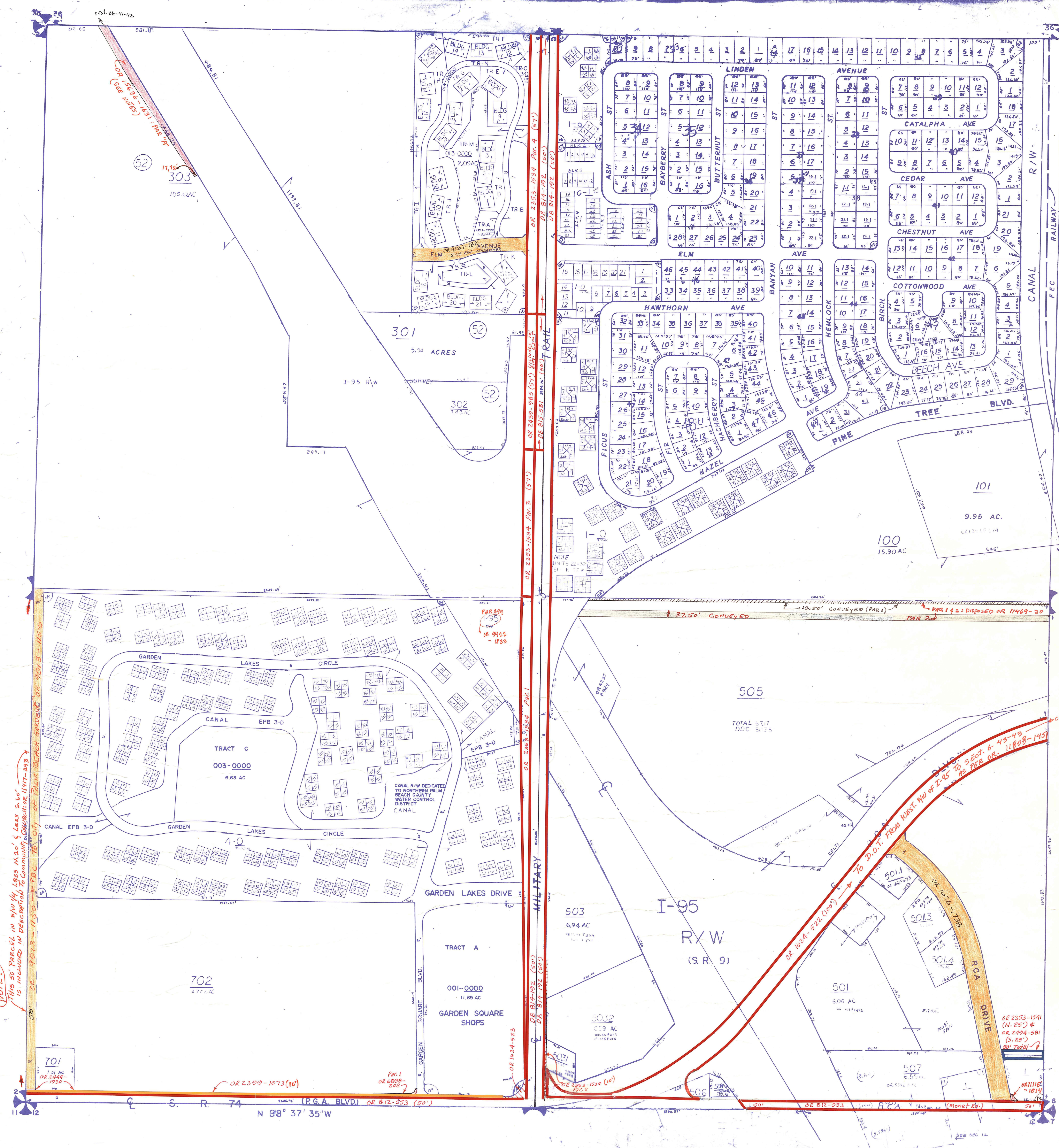
- P&A Blvd. P.B. Co. interest to DOT by OR 2420-537. As shown on RLW map Sec. 93471-2301. To Military Trail R/W.
- PAR "A" (I-95/CENTRAL BLVD) AS PER OR 15636-16357. SEE ALSO "PARCIAL RELEASE OF EASEMENT IN PORTION OF FRONT WHICH LIES WITHIN PARCEL "A" & PAR "B", SEE OR 15557-15977 FOR THIS RELEASE

PT OF NW 1/4, ALL OF NE 1/4 & S 1/2 IN CITY OF P.B. GARDENS 52
PT OF NW 1/4 IN COUNTY 00

NOTE:
NOT TO BE REPRODUCED IN ANY FORM EXCEPT BY EXPRESS WRITTEN CONSENT FROM THE

PLAT	NO	DATE
N-11	RE	
RGE	TWP	SEC
42	42	01
SCALE	1" = 200'	
DRAWN BY	J. J. J.	

1-42-42
To
10-42-42



NOTE:
THIS 50' PARCEL IN SW 1/4 LESS 5.60' IS INCLUDED IN DESCRIPTION TO COMMONLY KNOWN AS 1177-1037
SD DE 2013-1150
CITY OF PALM BEACH GARDENS OR 901.3-1150

OR 2399-1073 (10)
OR 4908-208
OR 812-353 (50')

N 89° 37' 35" W

S. R. 74