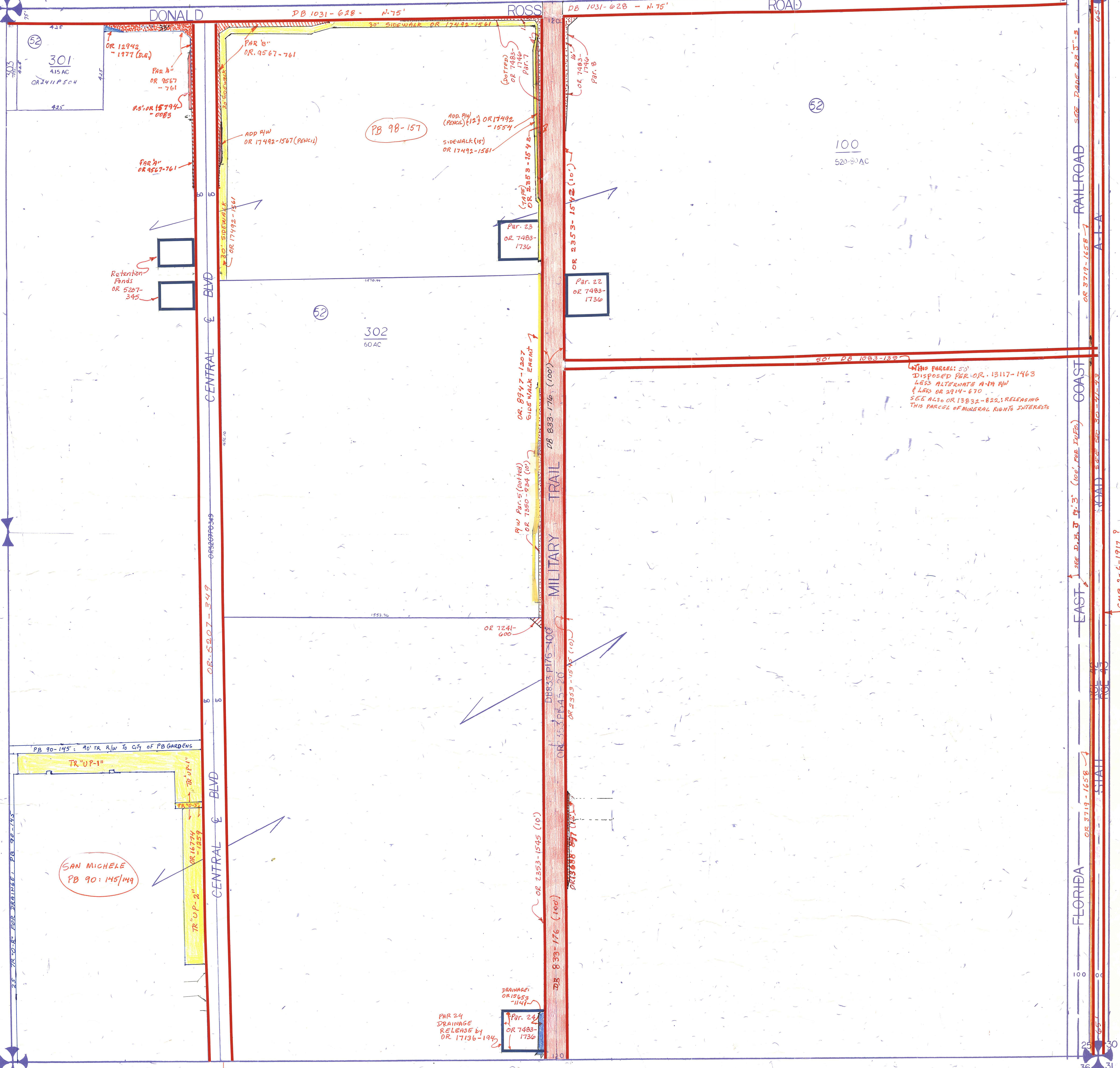
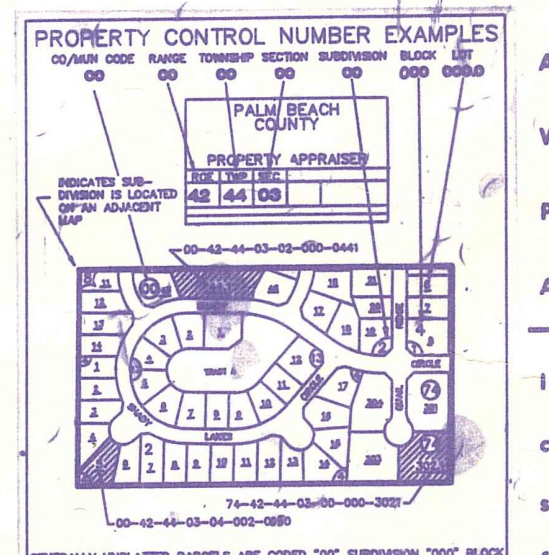


Palm Beach County (County) makes no representation or warrants whatsoever on the attached / enclosed information reflected herein pertaining to easements, rights-of-way, setback lines, reservations, agreements, and other similar matters. The information provided herein should not be relied upon by the requesting party to confirm the existence / non-existence of facts contained herein.



NOTE:
ALL SEC. IN P.B. GARDENS

NOTE:
NOT TO BE REPRODUCED IN ANY FORM EXCEPT BY EXPRESS WRITTEN CONSENT FROM THE PALM BEACH COUNTY ASSESSOR.
Information shown hereon is compiled from the best available sources and CANNOT be used for surveys or land transfers of any type.



PALM BEACH COUNTY
N-9
PROPERTY APPRAISER

36	31	32	33	34	35	36	31
1	8	5	4	3	2	1	6
12	7	8	9	10	11	12	7
13	18	17	16	15	14	13	18
24	19	20	21	22	23	24	19
25	30	29	28	27	26	25	30
36	31	32	33	34	35	36	31
1	8	5	4	3	2	1	8

RGE	TWP	SEC	AERIAL
42	41	25	NO 740
SCALE	1"=200'		
DRAWN BY	Jan Byrle 9/21/75		
UPDATED	1/6/92 LHM		