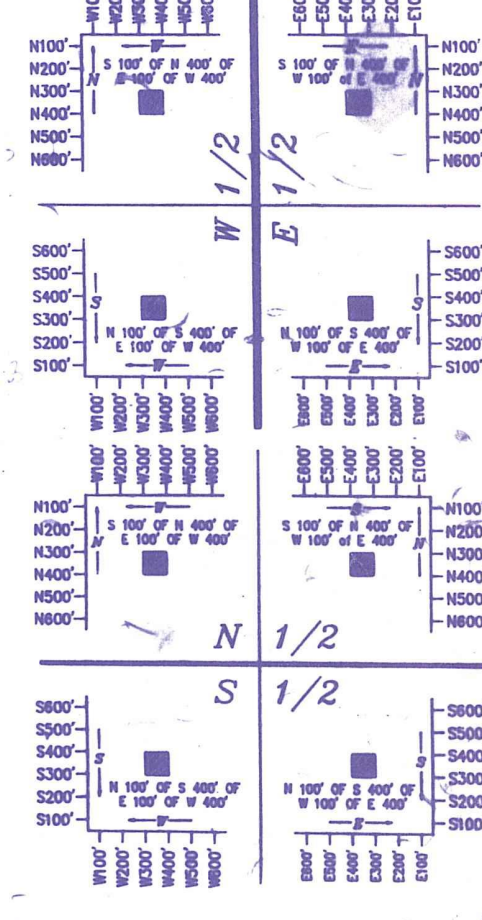


Palm Beach County (County) makes no representation or warranties whatsoever on the attached / enclosed information reflected herein pertaining to easements, rights-of-way, setback lines, reservations, agreements, and other similar matters. The information provided herein should not be relied upon by the requesting party to confirm the existence / non-existence of facts contained herein.

LEGAL DESCRIPTION EXAMPLES

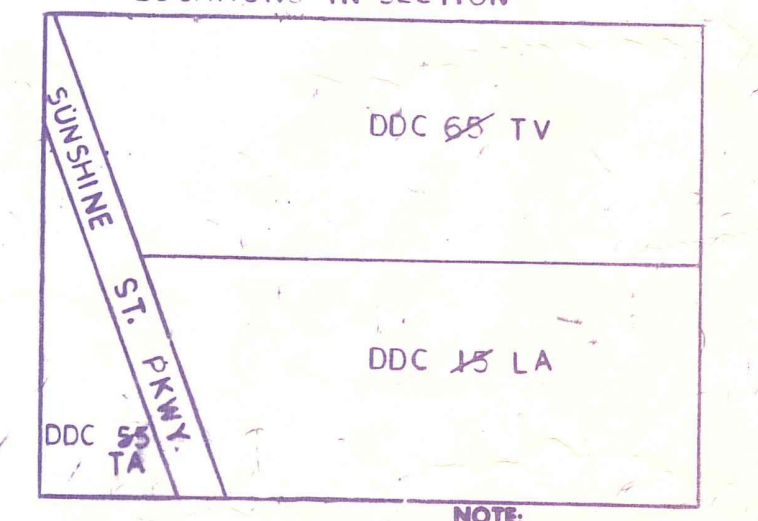


NOTE:
PARCELS IN N 1/2 MEAS ALONG LINES PARALLEL TO N SEC LI & N-S 1/4 LINE. ACREAGE FROM DEEDS.

NOTE:
N 1/2 E OF PKWY CMC 14
W " " 21
S 1/2 (CALL) " 32

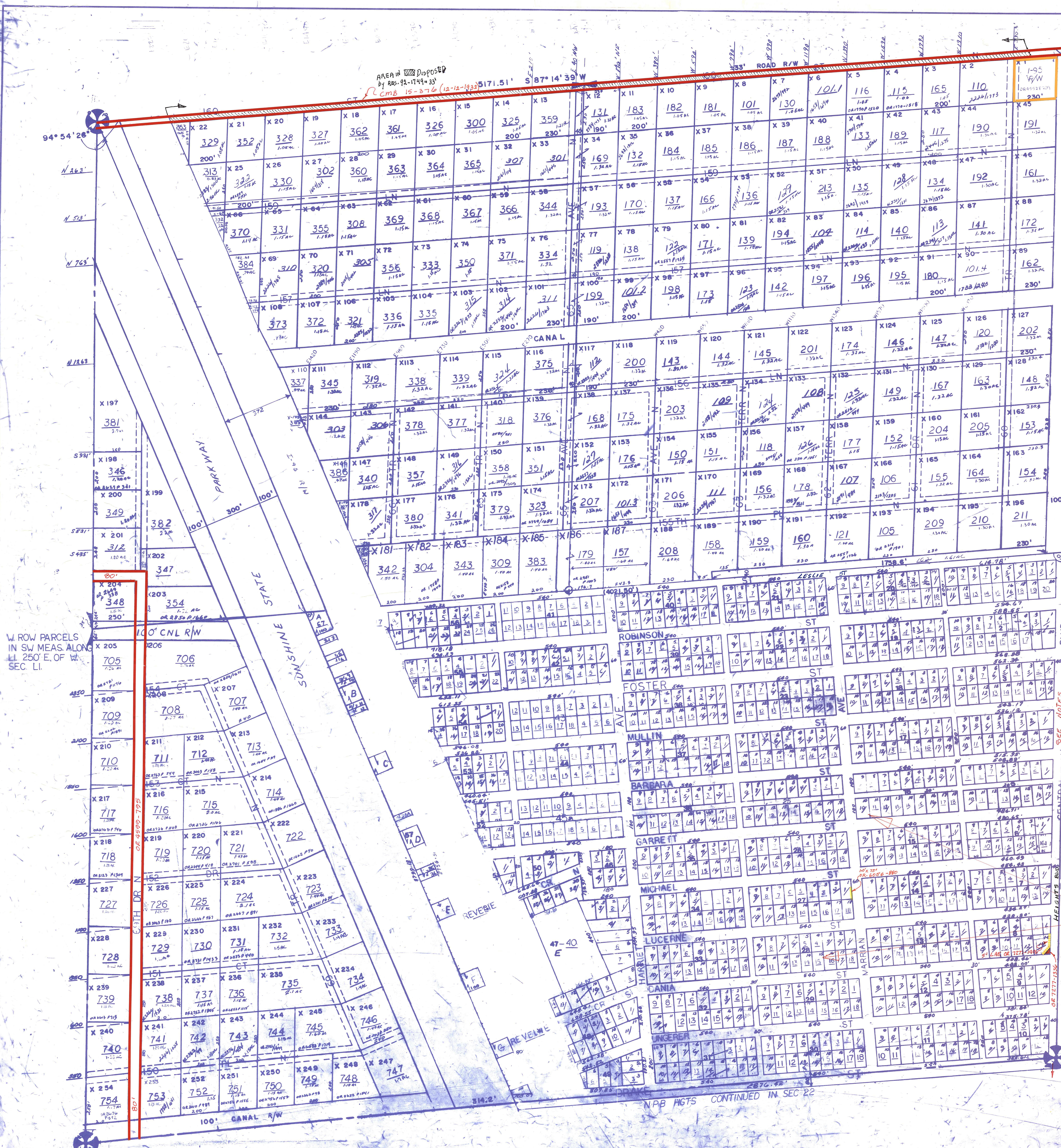
★ OI- N.P.B. HGTS. AM 45 (UNREC)

NOTE:
30 N 1/2 SEC IN JUPITER (EAST) 00-S 1/2 SEC. IN COUNTY



Notes:
All roads in North Palm Beach Heights (Am45) by R-92-1012 (R/W file N-9) & OR 7424-1113. HEIGHTS BVD: (OLD CENTRAL BVD)
RES. 93-298 ACCEPTING MAINTENANCE OF HEIGHTS BVD FROM LESLIE ST. TO DIAMOND ST. SECT. 15, 22 (41-42)

PALM BEACH COUNTY
N-7
PROPERTY APPRAISER
RGE TWP SEC AERIAL
42 41 15 NO 63-12
SCALE 1" = 200'
DRAWN BY Mc ADAMS
UPDATED



W. ROW PARCELS IN SW MEAS. ALONG L. 250' E. OF W. SEC. LI.

N.P.B. HGTS. CONTINUED IN SEC 22