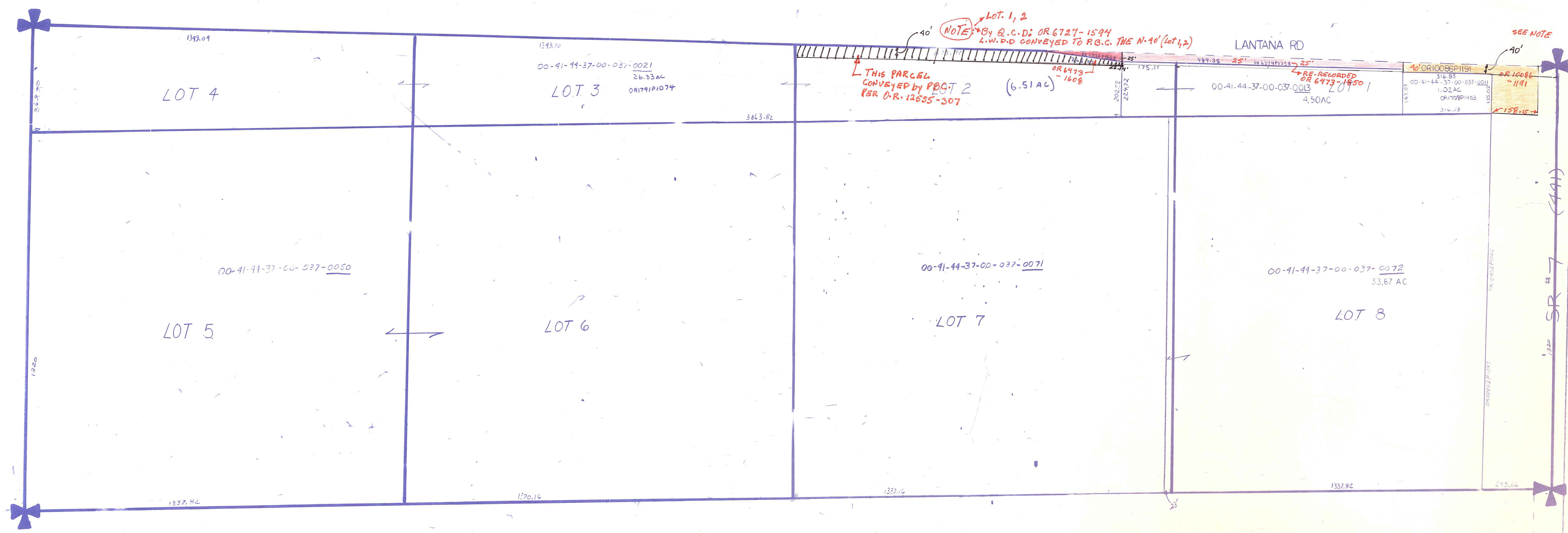
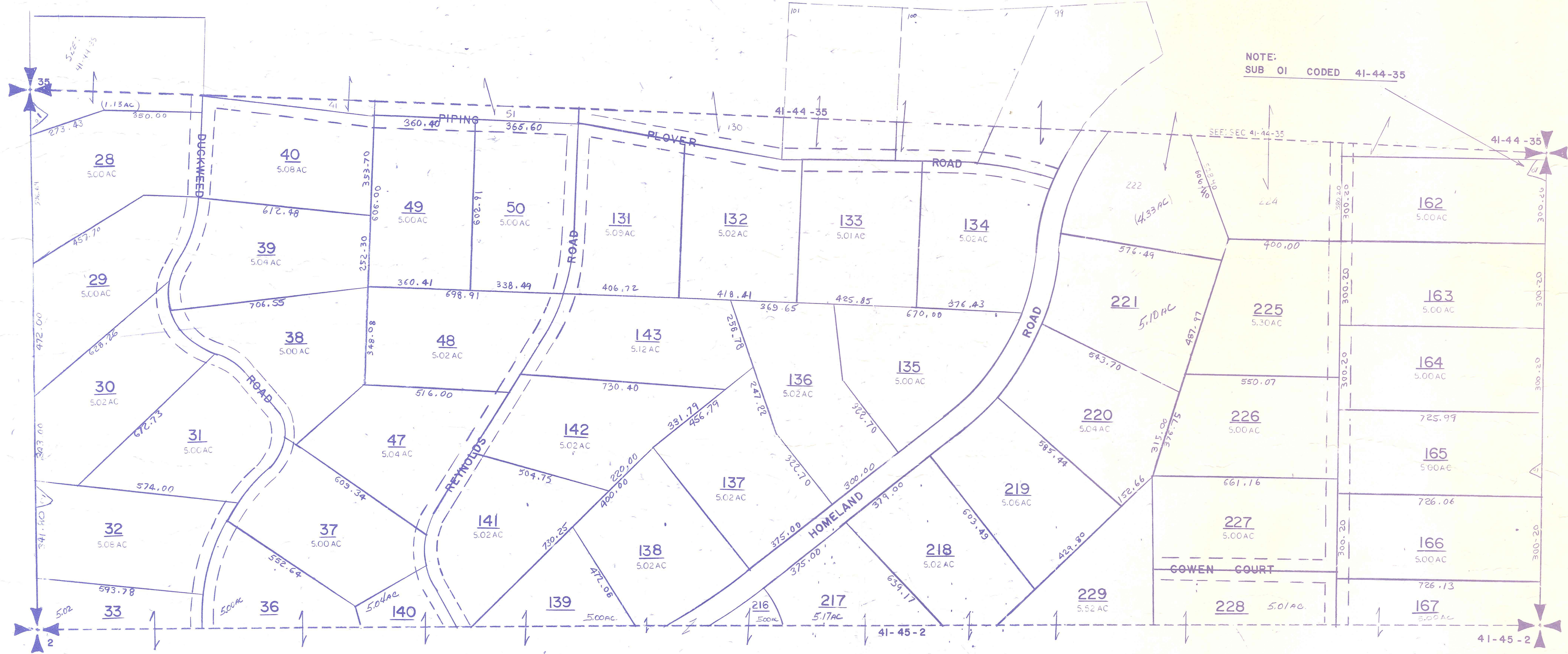


Palm Beach County (County) makes no representation or warranties whatsoever on the attached / enclosed information reflected herein pertaining to easements, rights-of-way, setback lines, reservations, agreements, and other similar matters. The information provided herein should not be relied upon by the requesting party to confirm the existence / non-existence of facts contained herein.



HIATUS TRACT 37



HIATUS TRACT 38

FOR TRS 39 & 40: SEE 41-44-33/34

NOTE:
NOT TO BE REPRODUCED IN ANY FORM EXCEPT BY EXPRESS WRITTEN CONSENT FROM THE PALM BEACH COUNTY ASSESSOR.
Information shown herein is compiled from the best available sources and CANNOT be used for surveys or land transfers of any type.

M-26 L-26

PALM BEACH COUNTY
GARY R. NIKOLITS
 PROPERTY APPRAISER

RGE	TWP	SEC	TRACT	AERIAL
41	44 1/2	HIATUS	38	146E 146F

SCALE 1" = 200'
 DRAWN BY: OLLIS

DRAWING 44141 14606