

**E 1/2 of Chukker Hill Of Wellington
Country Place (1981) PB40P44**

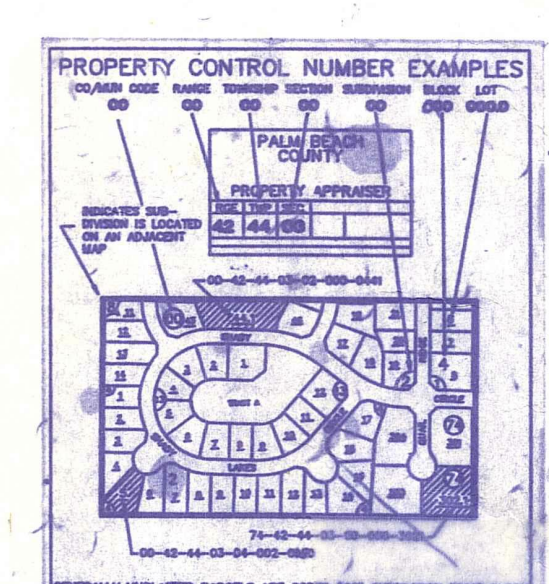
- ABNDED PER RES. R-7477 AS IN B5247-303
- NE 02 PALMBEACH POLO EQUESTRIAN CLUB
PL 1 OF WELLINGTON COUNTRYPLACE (89) PB60P138
 - NE 03 PALM BEACH POLO EQUESTRIAN CLUB
PL 2 (89) PB61 P112
 - NE 04 PALM BEACH POLO EQUESTRIAN CLUB
PL 3 (89) PB61 P114
 - E 1/2 05 EQUESTRIAN CLUB ESTATES PL 1 OF
P B POLO & C C WELLINGTON COUNTRYPLACE
(91) PB64P187
 - E 1/2 06 EQUESTRIAN CLUB ESTATES PL 2 OF
P B POLO & C C WELLINGTON COUNTRYPLACE
(91) PB64P190
 - E 1/2 07 EQUESTRIAN CLUB ESTATES PL 3 OF
P B POLO & C C WELLINGTON COUNTRYPLACE
(91) PB64P193
 - E 1/2 08 EQUESTRIAN CLUB ESTATES PL 4 OF
P B POLO & C C WELLINGTON COUNTRYPLACE
(91) PB66P98
 - W 1/2 09 GRAND PRIX FARMS PL 1 (91) PB67P14
 - NE 10 PALM BEACH POLO EQUESTRIAN CLUB PL3 REPL TR C
(92) PB68P166

Palm Beach County (County) makes no representation or warranties whatsoever on the attached / enclosed information reflected herein pertaining to easements, rights-of-way, setback lines, reservations, agreements, and other similar matters. The information provided herein should not be relied upon by the requesting party to confirm the existence / non-existence of facts contained herein.

Note: All Of Section In County

AC FFR ACME DRAINAGE MAP

NOTE:
NOT TO BE REPRODUCED IN ANY FORM EXCEPT BY EXPRESS WRITTEN CONSENT FROM THE PALM BEACH COUNTY ASSESSOR.

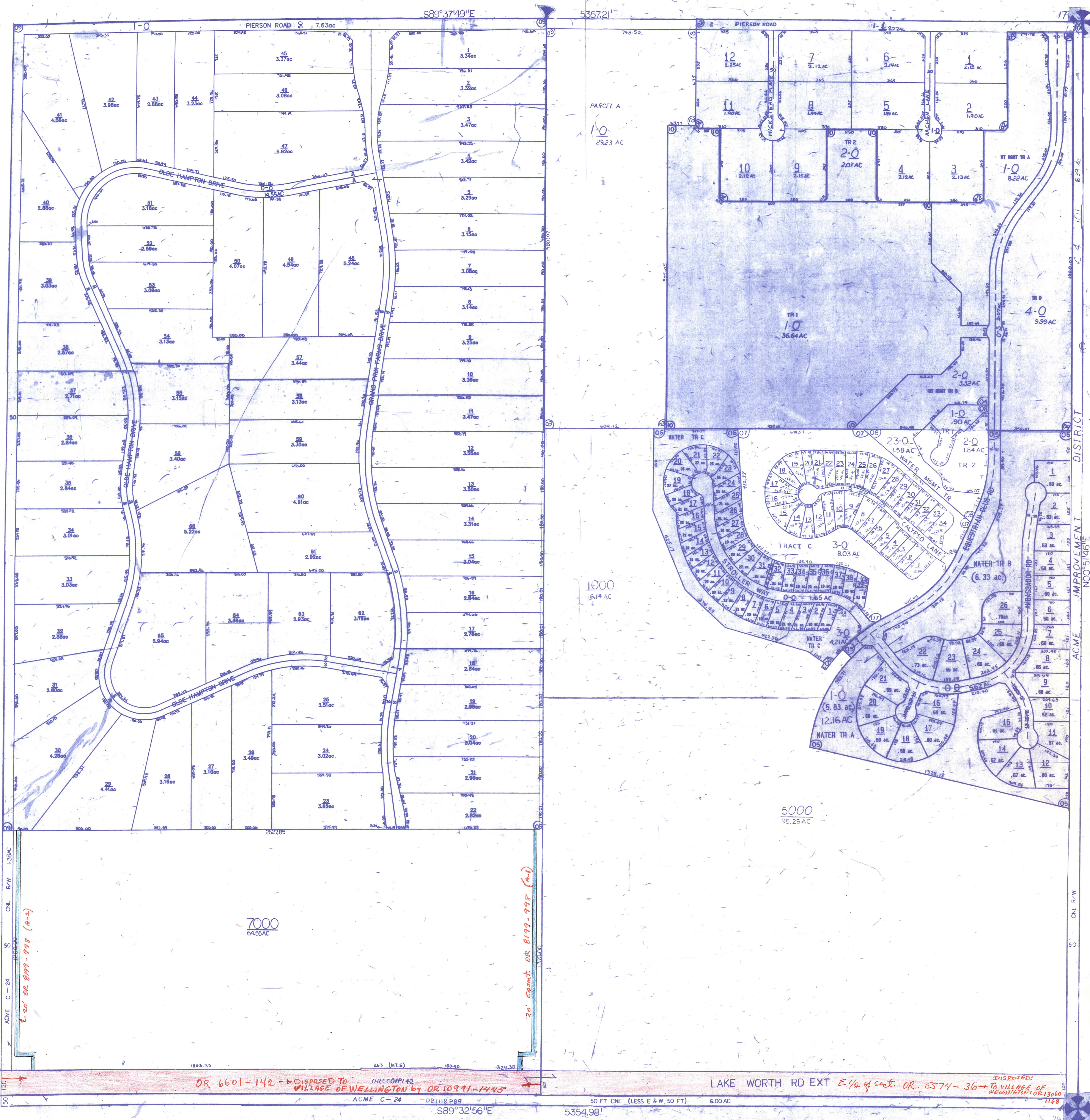


Information shown hereon is compiled from the best available sources and CANNOT be used for surveys or land transfers of any type.

PALM BEACH COUNTY

PROPERTY APPRAISER

RGE	TWP	SEC	AERIAL
41	44	20	NO55-58
SCALE			1"=200'
DRAWN BY			GRICE 11-23-74
UPDATED			4/13/91 rps



OR 6601-142 -> DISPOSED TO OR 6601P142 VILLAGE OF WELLINGTON BY OR 10991-1445
 LAKE WORTH RD EXT E 1/2 of sect. OR. 5574 - 36 -> TO VILLAGE OF WELLINGTON OR 13060
 ACME C-24 DB 1118 P87 50 FT CNL (LESS E & W 50 FT) 6.00 AC
 S89°32'56"E 5354.98'

2' OR 8997-998 (A-2)

20' EXEMPT OR 8199-998 (A-1)

7000
64.55 AC

1000
16.14 AC

5000
95.25 AC

ACME IMPROVEMENT DISTRICT NO. 05146E