

N.W. 01 PALM BEACH COLONY SEC.1
 REPLAT P.B.28 P209
 N.W. 02 PALM BEACH COLONY SEC.2
 REPLAT P.B.28 P211

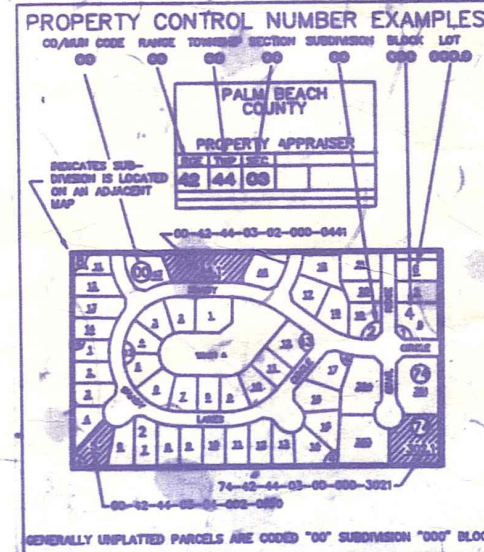
Palm Beach County (County) makes no representation or warrants whatsoever on the attached / enclosed information reflected herein pertaining to easements, rights-of-way, setback lines, reservations, agreements, and other similar matters. The information provided herein should not be relied upon by the requesting party to confirm the existence / non-existence of facts contained herein.

Notes:
 -Southern Blvd. (S.R.80) Please Note: CMB 13-490 for S.R.80 describes a 100' R/W for 17.9 miles. The description can not be plotted with reasonable accuracy. (6-20-1930)

NOTE:
 ALL NORTH OF S.R.80 CODED 72
 REMAINDER IN COUNTY 00

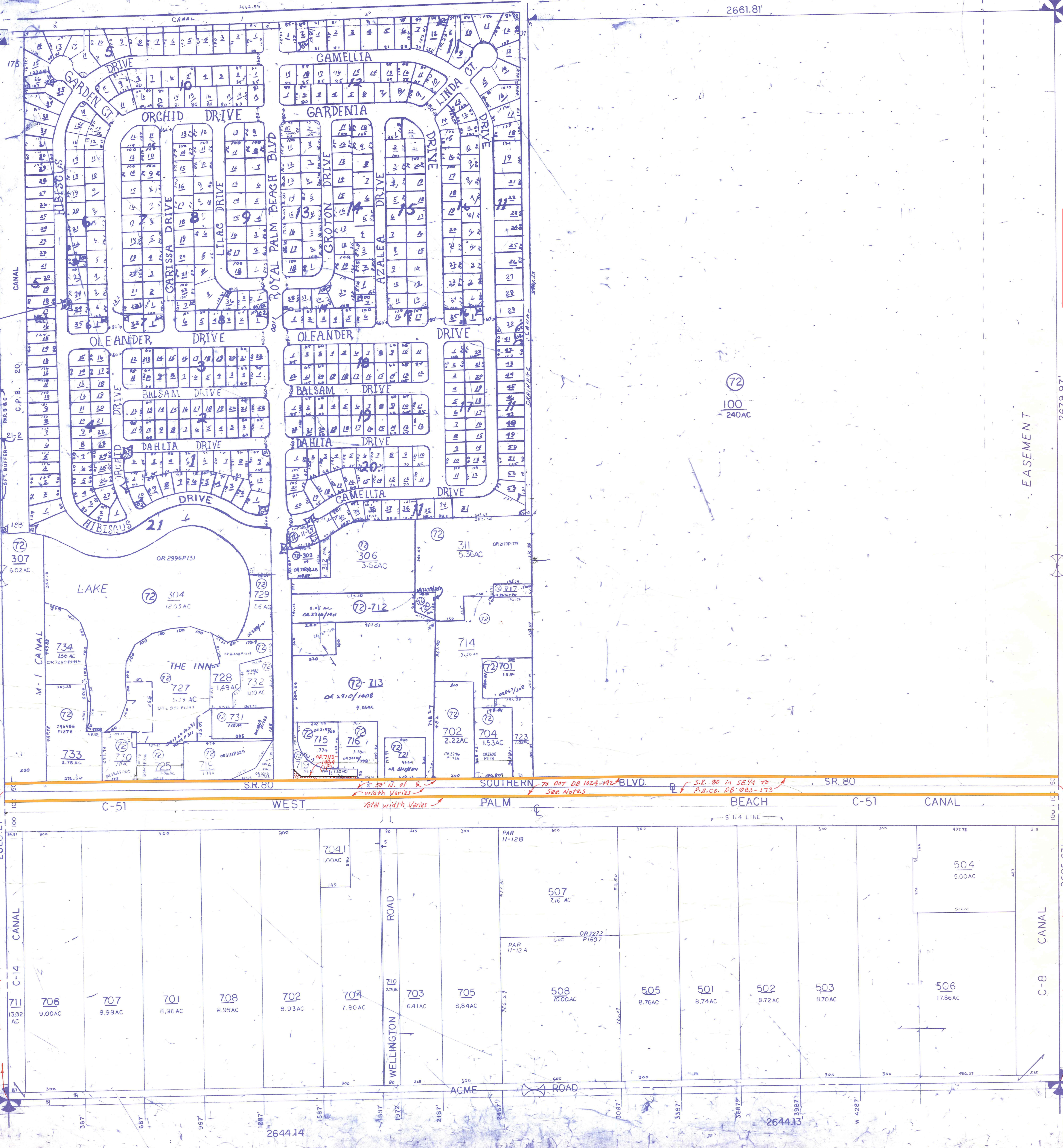
NOTE:
 NOT TO BE REPRODUCED IN ANY FORM EXCEPT BY EXPRESS WRITTEN CONSENT FROM THE PALM BEACH COUNTY PROPERTY APPRAISER

Information shown hereon is compiled from the best available sources and CANNOT be used for surveys or land transfers of any type.



PALM BEACH COUNTY
 N-21
 PROPERTY APPRAISER

RGE	TWP	SEC	AERIAL
41	43	35	NO 2058
SCALE 1" = 200'			
DRAWN BY			
UPDATED			7-7-2015



NOTE:
 PALM BEACH COLONY SEC 2 CODED IN SEC 26

1480.78' AS PER DB 1024-142

1541.69' AS PER DB 1024-142

S.R. 80 in SE 1/4 TO PAR 11-12 B
 S.R. 80 in SE 1/4 TO PAR 11-12 A
 S.R. 80 in SE 1/4 TO PAR 11-12 A
 S.R. 80 in SE 1/4 TO PAR 11-12 A

2665.63'

2678.97'

2661.81'

2661.49'

2644.14'

2644.13'

1480.78' AS PER DB 1024-142

1541.69' AS PER DB 1024-142

S.R. 80 in SE 1/4 TO PAR 11-12 B
 S.R. 80 in SE 1/4 TO PAR 11-12 A
 S.R. 80 in SE 1/4 TO PAR 11-12 A
 S.R. 80 in SE 1/4 TO PAR 11-12 A