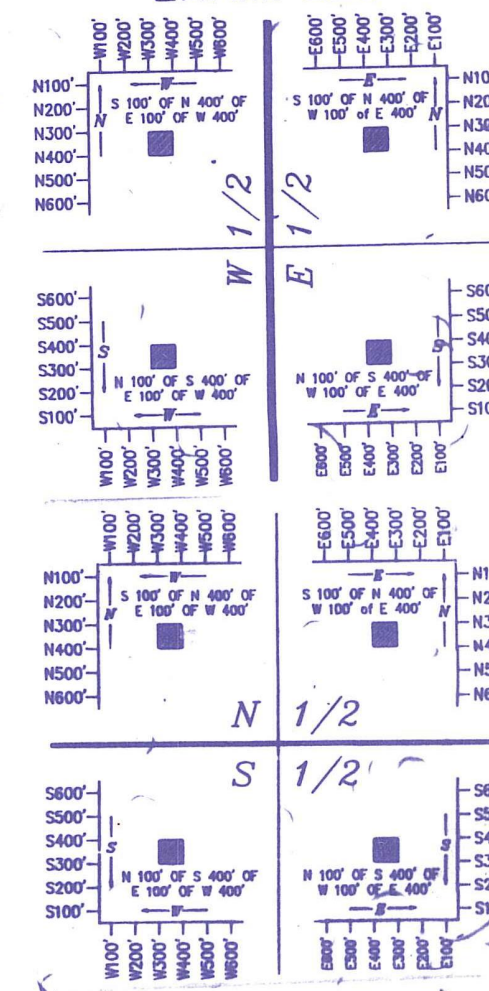


INDIANTOWN RD SR 706

N

LEGAL DESCRIPTION EXAMPLES

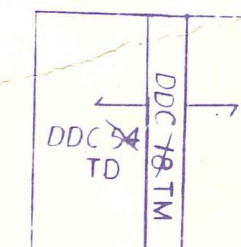


Palm Beach County (County) makes no representation or warranties whatsoever on the attached / enclosed information reflected herein pertaining to easements, rights-of-way, setback lines, reservations, agreements, and other similar matters. The information provided herein should not be relied upon by the requesting party to confirm the existence / non-existence of facts contained herein.

NOTE ALL EASEMENTS 60' UNLESS NOTED LIMITED SECTION DATA

ALL OF SECTION IN COUNTY-00

NOTE: PT SEC DD 78 TM ...



NOTE: NOT TO BE REPRODUCED IN ANY FORM EXCEPT BY EXPRESS WRITTEN CONSENT FROM THE PALM BEACH COUNTY ASSESSOR.

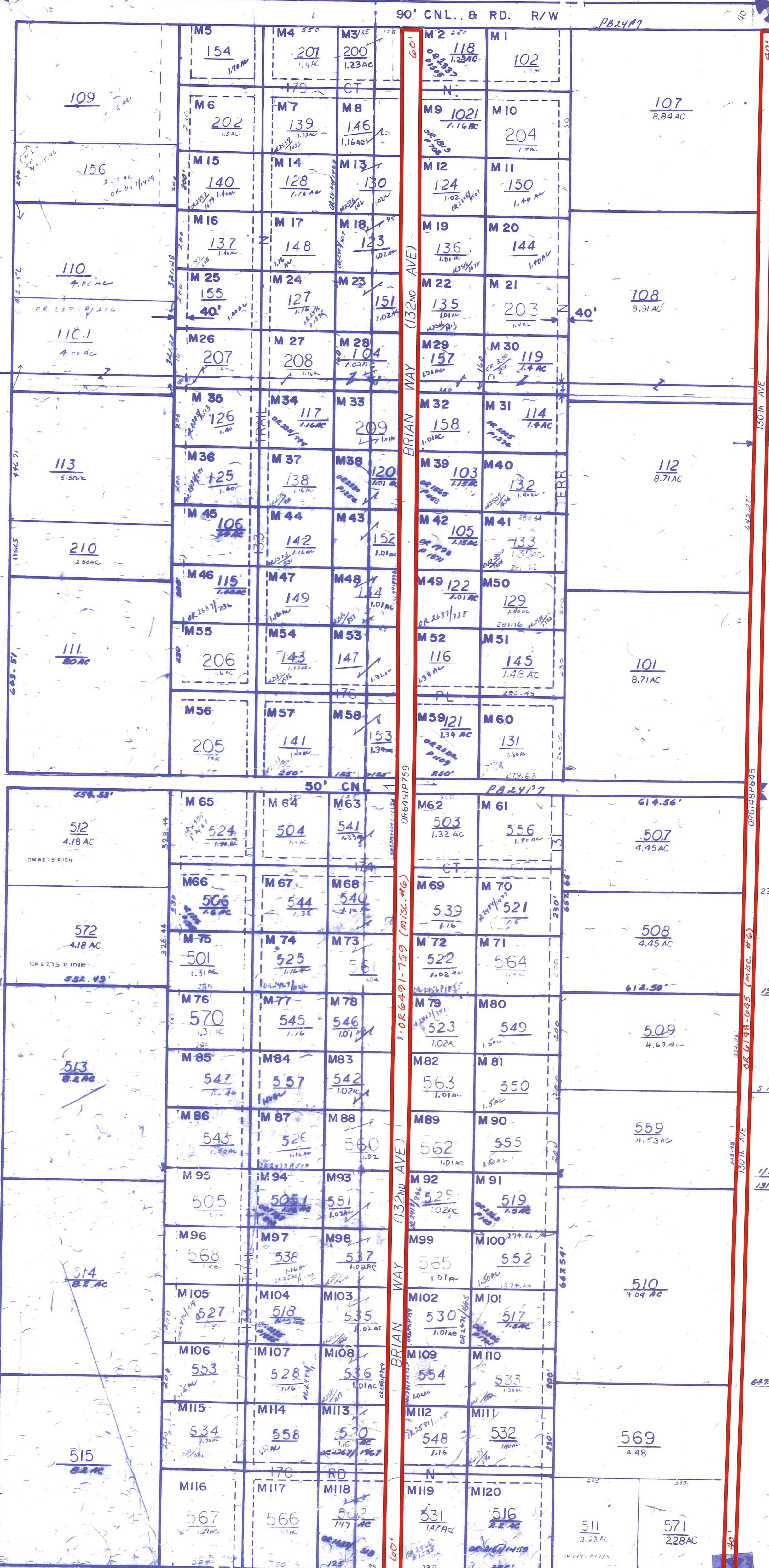
Information shown hereon is compiled from the best available sources and CANNOT be used for surveys or land transfers of any type.

PALM BEACH COUNTY Misc.

PROPERTY APPRAISER

1	2	3	4	5	6	7	8	9	10	11	12
13	14	15	16	17	18	19	20	21	22	23	24
25	26	27	28	29	30	31	32	33	34	35	36
37	38	39	40	41	42	43	44	45	46	47	48
49	50	51	52	53	54	55	56	57	58	59	60

RGE TWP SEC AERIAL
41 41 4 NO 56-8
SCALE 1" = 200'
DRAWN BY Mc ADAMS 4/75
UPDATED



301 317.50 AC

32 53

3

32 53

0-3