



Palm Beach County (County) makes no representation or warranties whatsoever on the attached / enclosed information reflected herein pertaining to easements, rights-of-way, setback lines, reservations, agreements, and other similar matters. The information provided herein should not be relied upon by the requesting party to confirm the existence / non-existence of facts contained herein.

900
507.6 AC

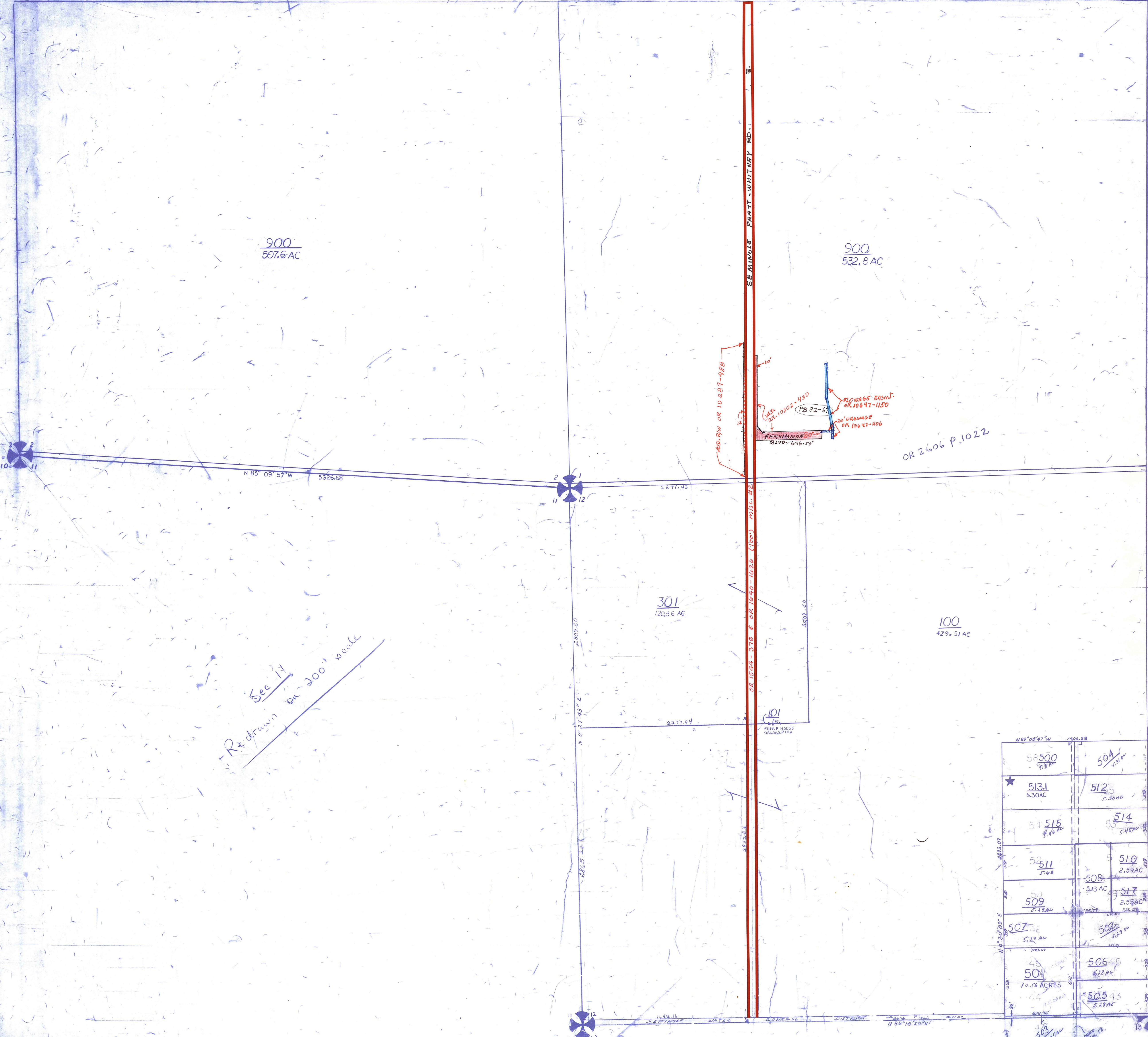
900
532.8 AC

301
120.56 AC

100
429.51 AC

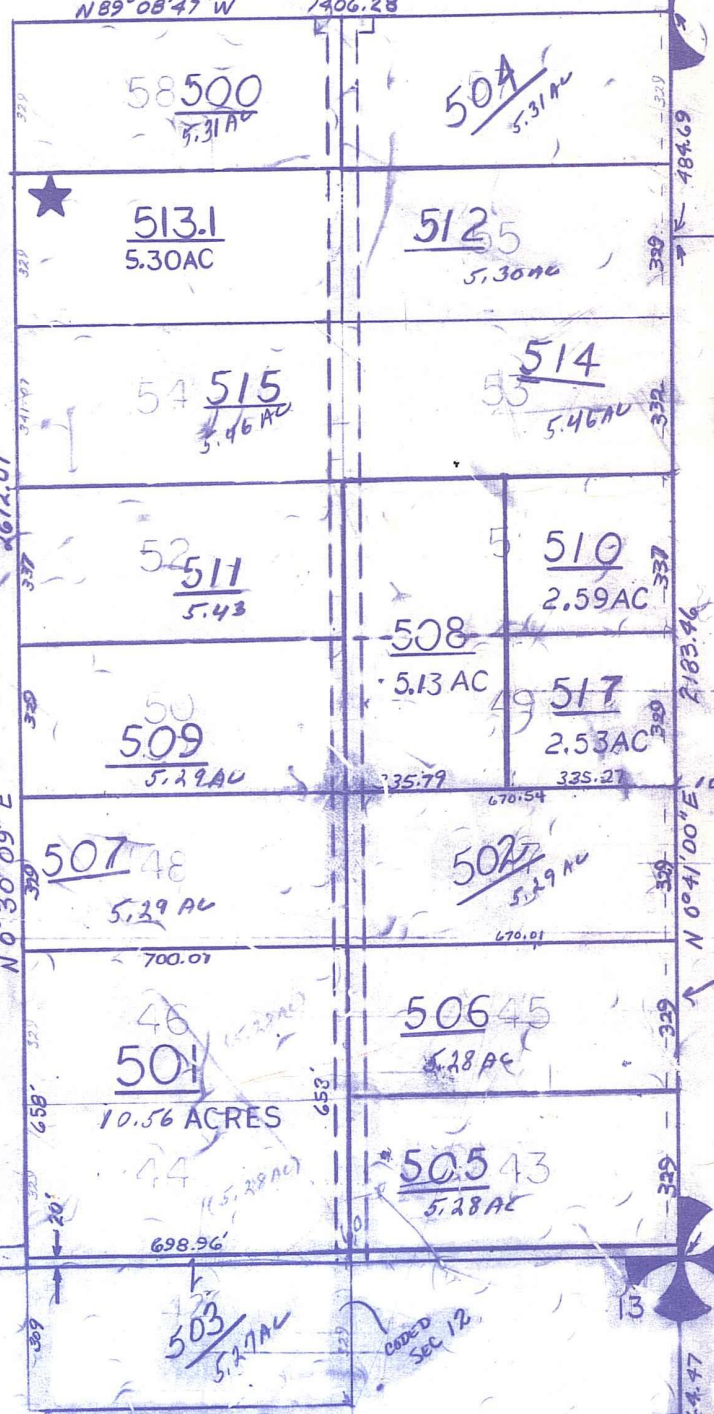
*Sec 14
Redrawn on 200' scale*

SE MINORLE PRATT WHITEFIELD RD.



OR 2606 P.1022

★ UND 1/2 INT IN GAS, OIL & MIN RGT.



LOXAHATCHEE WEST UNREGD PARCEL AC EXCLD'G B.S.M.B.

NOTE
NOT TO BE REPRODUCED IN ANY FORM EXCEPT BY EXPRESS WRITTEN CONSENT FROM THE PALM BEACH COUNTY ASSESSOR.
Information shown hereon is compiled from the best available sources and CANNOT be used for surveys or land transfers of any type.

S-15 R-16

PALM BEACH COUNTY
REBECCA E. WALKER
COUNTY ASSESSOR

| RGE | TWP | SEC | NO | AERIAL |
|----------|-----|------------|----|--------|
| 40 | 43 | 2 | 12 | NO |
| SCALE | | 1"=400' | | |
| DRAWN BY | | 1-5-91 JWC | | |
| UPDATED | | 1-5-91 JWC | | |

COUNTY 44444 23735