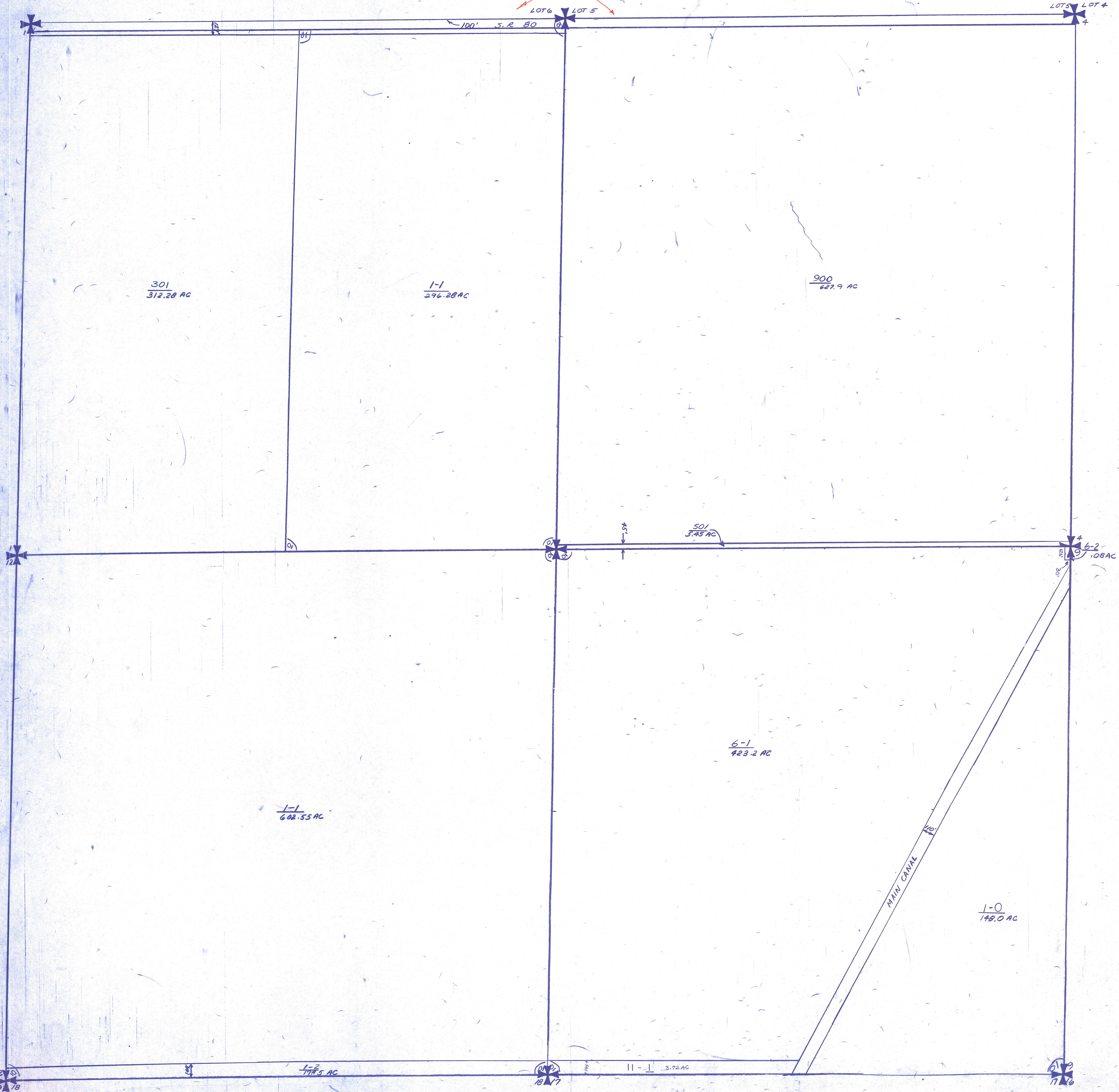


**Palm Beach County (County) makes no representation or warranties whatsoever on the attached / enclosed information reflected herein pertaining to easements, rights-of-way, setback lines, reservations, agreements, and other similar matters. The information provided herein should not be relied upon by the requesting party to confirm the existence / non-existence of facts contained herein.**



*NOTE:*  
 POC Disposed To E. Fla. WATER MGMT DIST.  
 TR. C-R-100-015' ON SECT. 5 & 6 - lying  
 5' N. OF NORTH EDGE OF PAVEMENT. SR. 80  
 AS OR 10362-1201



SECTIONS 56,7 GLADESVIEW  
 FARMS - 01 PB12 P89

ALL SECTIONS IN COUNTY - 00

**NOTE:**  
 NOT TO BE REPRODUCED IN  
 ANY FORM EXCEPT BY EXPRESS  
 WRITTEN CONSENT FROM THE  
 PALM BEACH COUNTY  
 ASSESSOR.  
 Information shown hereon is  
 compiled from the best available  
 sources and CANNOT be used  
 for surveys or land transfers of  
 any type.

11-21 HH-21  
 11-22 HH-22

**PALM BEACH COUNTY**  
**GARY R. NIKOLITS**  
 COUNTY ASSESSOR

RGE	TWP	SEC	AERIAL
39	24	6 5 7 8	NO/3-32
SCALE 1" = 400'			
DRAWN BY MCADAMS			
UPDATED			