

SE 01-PARK ELOISE PB 21P66-00-04,
 NW 02-EAST GLADE TERR REAL- 00-04
 PB 23 P 106
 E2 03-EARWOODS SUB PL PB 27P36-04
 NE 04-WHITAKERS ADD PB 27P150-04
 NE 05-EARWOODS 1ST ADD PB 28P91-04

Palm Beach County (County) makes no representation or warranties whatsoever on the attached / enclosed information reflected herein pertaining to easements, rights-of-way, setback lines, reservations, agreements, and other similar matters. The information provided herein should not be relied upon by the requesting party to confirm the existence / non-existence of facts contained herein.

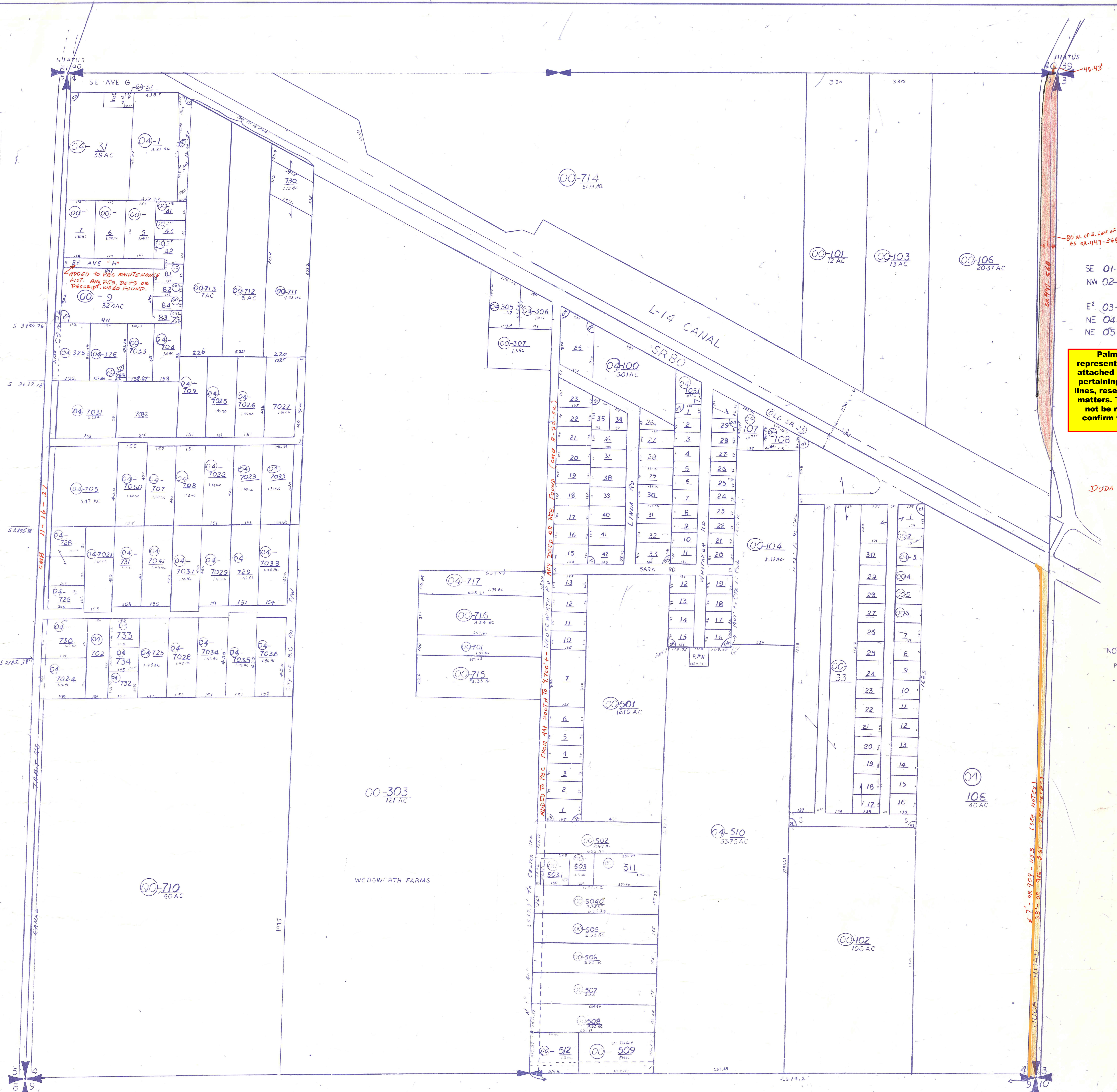
NOTES:
 DUDA RD: RETURNED TO PBC FOR MAINTENANCE by RES. 2-383 ADOPTED JULY 1, 1968 FROM 6880 TO 1.5 MILES SOUTH.

NOTE:
 PT OF SEC CODED IN 00-1

NOTE:
 NOT TO BE REPRODUCED IN ANY FORM EXCEPT BY EXPRESS WRITTEN CONSENT FROM THE PALM BEACH COUNTY ASSESSOR.
 Information shown herein is compiled from the best available sources and CANNOT be used for surveys or land transfers of any type.

PALM BEACH COUNTY
REBECCA E. WALKER
 COUNTY ASSESSOR

RGE	TWP	SEC	AERIAL
37	44	04	NO 1299
SCALE		1"=200'	
DRAWN BY		GRACE 11-8-73	
UPDATED		10/11/70 SV	



ADDED TO PBC FROM 411 SOUTH TO 4700' WEDGE WORTH RD ANY DEED OR RES FOUND (SEE P. 23-24)

7'-OR-909-1053 (SEE NOTES) 33'-OR-916-841 (SEE NOTES)

80' W. OF R. LINE OF SECT. AS OR-447-368

MM-21