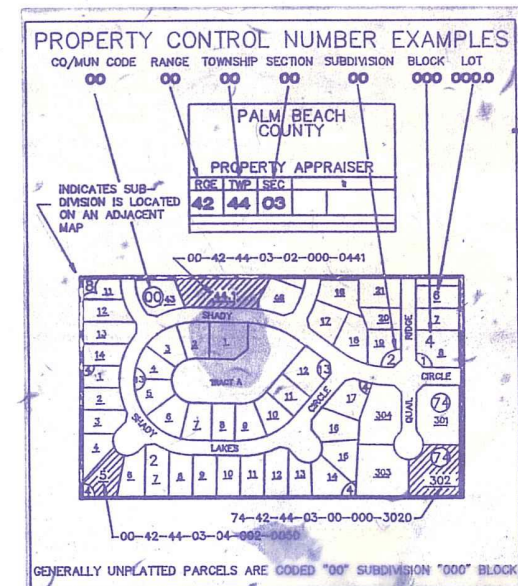


- SW 01 BELLE GLADE HIGHTS PB16P61
- SW 02 EASTLAKE PARK PB22P11
- SW 03 EASTLAKE PARK ADD NO.2 PB24P247
- SW 04 EASTLAKE PARK ADD NO.3 PB25P29
- SW 05 HILLSBORO PARK PB18P11
- SW 06 KIRCHMAN SUB PB21P8
- NW 07 LYONS PARK PB24P172
- SW 08 MANGA SUB PB16P72
- NW 09 UNWIN SUB PB26P184
- SW 10 WATTS SUB PB15P48
- NW 11 ZUMPF SUB PB27P166
- NW 12 ZUMPF SUB NO.2 PB276P250
- NW 13 ZUMPF SUB NO.3 PB28P39
- W 14 ALMA SUB (1977) PB31P224
- SW 15 EASTLAKE PARK ADD NO.4 (1982) PB42P40

Palm Beach County (County) makes no representation or warranties whatsoever on the attached / enclosed information reflected herein pertaining to easements, rights-of-way, setback lines, reservations, agreements, and other similar matters. The information provided herein should not be relied upon by the requesting party to confirm the existence / non-existence of facts contained herein.

NOTE
 ALL SUBS 04
 PTS OF SEC 04
 PTS OF SEC 00

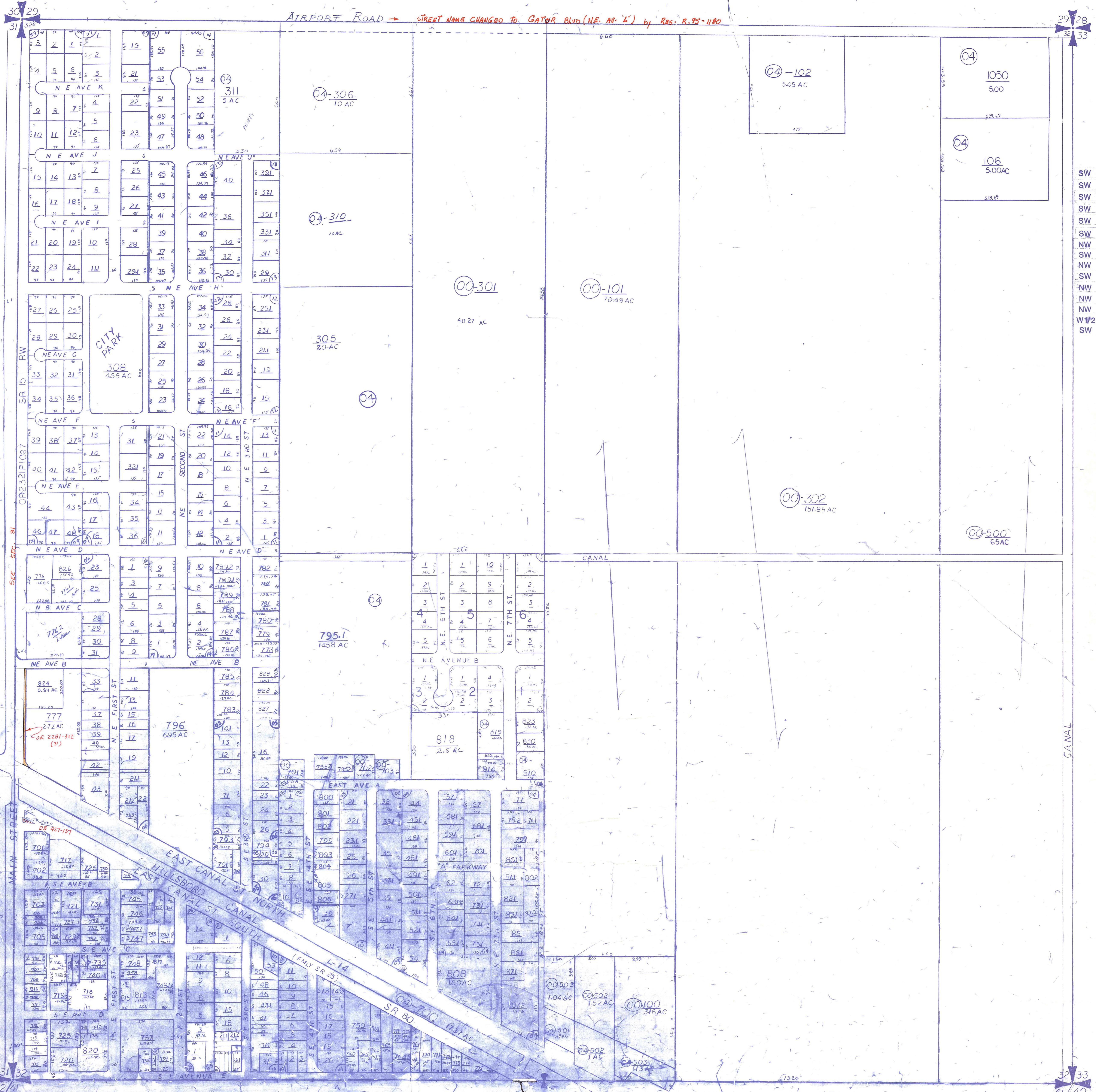
NOTE
 NOT TO BE REPRODUCED IN
 ANY FORM EXCEPT BY EXPRESS
 WRITTEN CONSENT FROM THE
 PALM BEACH COUNTY
 ASSESSOR.



Information shown hereon is
 compiled from the best available
 sources and CANNOT be used
 for surveys or land transfers of
 any type.

PALM BEACH
Misc. COUNTY
GARY R. NIKOLITS
 PROPERTY APPRAISER

36	31	32	33	34	35	36	31
37	31	32	33	34	35	36	31
38	31	32	33	34	35	36	31
39	31	32	33	34	35	36	31
40	31	32	33	34	35	36	31
41	31	32	33	34	35	36	31
42	31	32	33	34	35	36	31
43	31	32	33	34	35	36	31
44	31	32	33	34	35	36	31
45	31	32	33	34	35	36	31
46	31	32	33	34	35	36	31
47	31	32	33	34	35	36	31
48	31	32	33	34	35	36	31
49	31	32	33	34	35	36	31
50	31	32	33	34	35	36	31
51	31	32	33	34	35	36	31



30 29
31 32

29 28
32 33

31 32
42 41

32 33
41 40