



## PALM BEACH COUNTY CRIMINAL JUSTICE COMMISSION

### **CORRECTIONS TASK FORCE/ Public Safety Coordinating Council**

Palm Beach County Governmental Center  
301 N. Olive Avenue, 12<sup>th</sup> Floor McEaddy Conference Room  
West Palm Beach, Florida 33401

Wednesday, May 6, 2009; 12:00 P.M.

### **-SUMMARY MEETING MINUTES-**

#### **MEMBERS PRESENT:**

**Chairman Douglas Duncan**, Roth and Duncan, P.A.  
**Vice-Chairman Chris Kneisley**, Major, Palm Beach Sheriff's Office  
**Ted Booras**, Judge, 15<sup>th</sup> Judicial Circuit  
**Bob Bozzone**, Executive Director, Comprehensive Alcohol Rehabilitation Program  
**Lucy Chernow Brown**, Judge, Circuit Court  
**Patrick Cannan**, Workforce Alliance  
**Roger M. Crane**, Police Chief, Palm Beach County Chiefs of Police Association  
**Jill Richstone**, State Attorney's Office  
**Alton Taylor**, Executive Director, Drug Abuse Foundation  
**Charles Trotta**, Manager, Palm Beach County Pretrial Services Agency  
**Barbara White**, Public Defender's Office  
**Shelley Vana**, Commissioner, Palm Beach County

#### **MEMBERS ABSENT:**

**Rosalyn Baker**, Florida Department of Corrections  
**Maureen F. Brickous**, County Probation, PRIDE Integrated Services, Inc.  
**Tommy Richards**, Palm Beach County Bail Bond Association  
**Gene Thompson**, Chaplain, Palm Beach Sheriff's Office  
**Louis Tomeo**, Office of the Clerk and Comptroller, Director Criminal Court Services

#### **GUESTS PRESENT:**

**Cristy Altaro**, Court Administration  
**Colleen Farnsworth**, Department of Children and Families, Legal  
**Anthony Flowers**, Superintendent, Department of Juvenile Justice  
**Barry Fondiller**, Jail Counselor, Palm Beach Sheriff's Office  
**Ken Huxold**, Pride Integrated Services Inc.  
**Shelby King**, Palm Beach County Sheriff's Office  
**Bea Lovelace**, Office of the Clerk and Comptroller  
**Marcela Millett**, Court Administration  
**Elizabeth Parker**, State Attorney's Office

**CJC STAFF PRESENT:**

**Journey Beard**, Crime Prevention Project Specialist  
**Damir Kukec**, Research and Planning Manager  
**Jenise Link**, Sr. Criminal Justice Analyst  
**Michael Rodriguez**, Executive Director  
**Candee Villapando**, Criminal Justice Analyst

**I. Chairman Duncan welcomed the members and guests of the task force.**

A sincere appreciation was expressed to Judge Nancy Perez for all of her work on the Task Force for the past year. Chairman Duncan introduced Judge Ted Booras and welcomed back Judge Krista Marx who will be participating on the Task Force.

**II. The agenda was approved with additions.**

**III. The minutes of the April 1, 2009 meeting of the CTF/PSCC were approved.**

**IV. Reports**

**A. Jail Population Report**

Major Kneisley reported that the total population today of the jail is 2,681 which he stated remains lower than the projected population. Chief Crane asked what has attributed to the decline and Major Kneisley noted that bookings have decreased due to lower arrests. Chairman Duncan added that the first appearance judges and the cooperation of the public defender's office and state attorney's office has assisted in resolving VOP's at the Gun Club courthouse rather than having those cases come to the other courthouses.

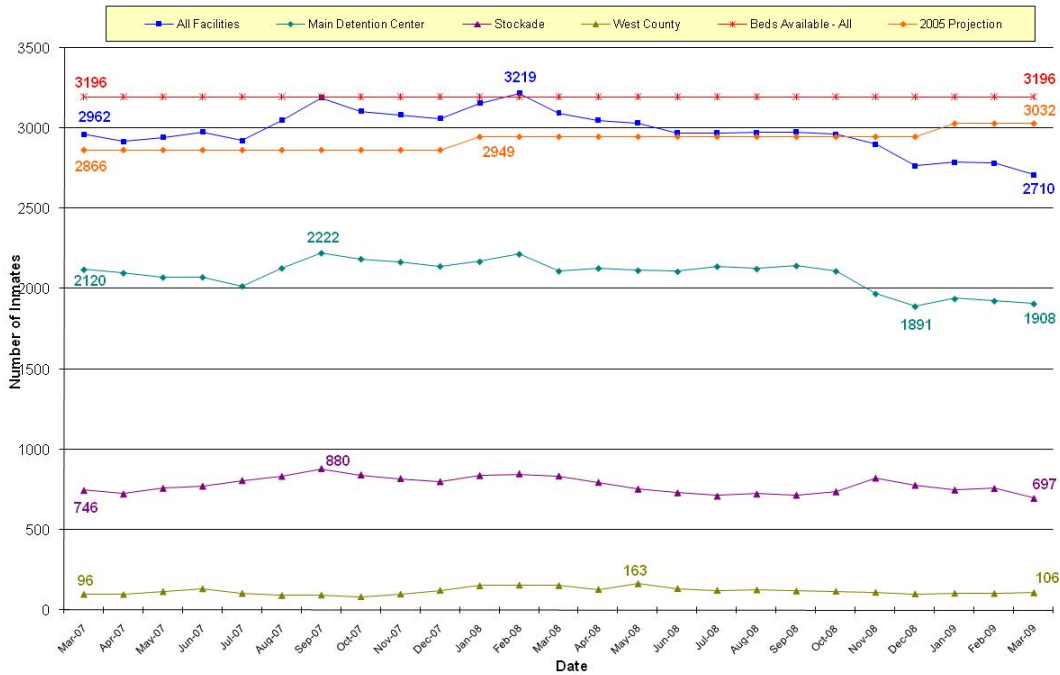
See Charts/graphs following from previous month:

Palm Beach County Criminal Justice Commission  
Corrections Task Force/Public Safety Coordinating Council  
Palm Beach County Correctional Facilities Monthly Population Report  
January - March 2009  
Data Source: Palm Beach County Sheriff's Office, Corrections Department

Facility	March Average Daily Population	Jan - Mar Average Daily Population	EXISTING CAPACITY			FUTURE CAPACITY	
			Number Beds*	March Percent Occupied (ADP/Capacity)	Jan - Mar Percent Occupied (ADP/Capacity)	Number Beds*	Jan - Mar Percent Occupied (ADP/Capacity)
Main Detention Center	1,908	1,924	2,114	90%	91%	2,114	91%
Stockade Detention Center (Including 96 bed Drug Farm)	697	735	944	74%	78%	944	78%
West County Detention Center	106	103	138	77%	75%	262	39%
<b>COUNTYWIDE TOTAL</b>	<b>2,710</b>	<b>2,761</b>	<b>3,196</b>	<b>85%</b>	<b>86%</b>	<b>3,320</b>	<b>83%</b>

\*Does not include 106 beds for medical.

Palm Beach County Criminal Justice Commission  
 Corrections Task Force/Public Safety Coordinating Council  
**Average Daily Populations by Date and Facility**  
 Data Source: Palm Beach County Sheriff's Office, Corrections Department



**B. Jail Counselor Report**

The Jail Counselor, Mr. Fondiller, provided a report that showed the status of DCF transfers and misdemeanor booking averages. Mr. Fondiller reported that the total average of days misdemeanants spent in jail in April was 3.2 days. He added that the average number of days for misdemeanants between booking and sentencing was 4.6 days. Mr. Fondiller also provided a report in following up with a topic from the last meeting on the court ordered evaluations. He stated that his analysis showed 105 total evaluations were ordered in March this year. Of those 105, 87 were for SAAP evaluations, 13 were for mental health assessments and 5 were not ordered. Judge Booras noted that there is an automatic return for those that have assessments ordered and that himself and Judge Marx (the two First Appearance Judges) are addressing those instances.

**C. Juvenile Detention**

Department of Juvenile Justice Superintendent, Anthony Flowers supplied a report that showed the average population of the juvenile detention center in March and April and stated that the average population today was at 64. (A copy of the full report is attached to the end of the minutes).

---

He mentioned that this is a low population for the center and expects a slight upturn in the summer months.

**D. Pretrial Services Report**

The Pretrial Services Manager, Mr. Trotta, provided members with a printed report detailing the Supervised Release Pretrial Services Program. The report notes that it is current as of May 4<sup>th</sup>. He stated that there are a total of 1,140 defendants on Supervised Own Recognizance (S.O.R.) and that 959 of these are out of custody. He further reported that there are a total of 639 defendants on S.O.R. only and 501 that have a money bond attached to the S.O.R. Eighteen individuals were on S.O.R. and were in custody for the following reasons:

Probation/Parole Violation		1
S.O.R. to Treatment	4	
Bonds or No Bonds on Other Charges/Holds		12
S.O.R. to V.A. Hospital		1

**V. New Business**

**A. Review of in custody cases with no-bonds**

Major Kneisley provided a preliminary report showing that approximately 50% of inmates are in custody with no bonds:

22.5% have first degree felony charges

28% have VOP, VSOR, or FTA charges

Chairman Duncan and Major Kneisley concurred that these numbers appear reasonable. Mr. Rodriguez and Commissioner Vana asked what the comparison is to other jurisdictions.

**B. Review of Fast Track Law Enforcement Booking program**

Chief Crane discussed a Florida Attorney General's opinion regarding having certified officers process bonds in lieu of bringing a person into custody. Chief Crane offered that in the past police departments and the Sheriff could process bonds that were less than \$1,000. He commented that he would do more research since that opinion was dated in 1974.

**VI. Old Business**

**A. Status update on in-patient and out-patient treatment assessments and placement from the jail.**

Chairman Duncan referred members to a letter from Judge Nancy Perez that included her investigation into the court ordered evaluations.

**B. Misdemeanor FTA bonds per F.S. 903.046**

Ms. White stated that the first appearance judges are addressing the willful failure to appear cases now and are also addressing the \$2,000 bond misdemeanor cases. In reference to subsection 2(d) of Florida Statute 903.046, Ms. White suggested that the CJC prompt the legislature to revise the statute language to include "charged with a felony" in the

---

second sentence after “any defendant...”. This would allow discretion on the misdemeanor cases. Chairman Duncan requested that Ms. White propose her suggested changes in writing, to collaborate with the State Attorney’s office, and to come back to the Task Force at the end of summer. At that point the Task Force can decide to make a recommendation to the Criminal Justice Commission on any proposed legislative changes.

**VII. Additional Member and guest comments**

Ms. White added for discussion the topic of violation of Supervised Own Recognizance (S.O.R.) cases. Of particular concern are the technical violations. She referred to a preliminary report prepared by the CJC staff that indicated there were 28% of people on S.O.R. technical violations in one month which would be approximately 26 people. She suggested that those persons come back for a first appearance hearing. Mr. Trotta explained that from the report, there are 26 people on S.O.R. that are in jail. These are in custody S.O.R. cases and not necessarily all technical violations; they could be no bond cases. This issue will be researched for further clarification and will be discussed at the next Task Force meeting.

Judge Chernow Brown mentioned that after a pilot project for felony VOP’s was initiated, they had considered looking at misdemeanor VOP’s. Their committee decided not to pursue the issue though. Chairman Duncan stated that those cases would consist of much larger dockets. Judge Chernow Brown, Barbara White, Judge Booras, Judge Basso Pardo, Elizabeth Parker, Jill Richstone, Charlie Trotta and Michelle Spangenberg will participate in a subcommittee meeting to discuss the in custody misdemeanor VOP’s.

Chairman Duncan announced that there will be a joint meeting of the Alternatives to Incarceration Advisory Board and the Drug Court Operations Advisory Board on May 20th. Chairman Duncan also announced that the June and July Corrections Task Force/Public Safety Coordinating Council meetings are cancelled.

**VIII. Adjournment**

JL, CJC 5/6/09

Attached report from Department of Juvenile Justice:



**Palm Beach Regional Juvenile Detention Center  
Population Statistical Report  
3/1/2009 Through 3/31/2009**

<u>Shift</u>	<u>Population</u>	<u>T/R</u>	<u>Admissions</u>	<u>Releases</u>
<b>Sunday, March 01, 2009</b>				
A Shift	76	0	1	2
B Shift	75	0	0	1
C Shift	74	0	3	1
Total Admissions / Releases for 3/1/2009 (3 detail records)			4	4
<b>Monday, March 02, 2009</b>				
A Shift	76	0	2	2
B Shift	76	0	1	4
C Shift	73	0	3	1
Total Admissions / Releases for 3/2/2009 (3 detail records)			6	7
<b>Tuesday, March 03, 2009</b>				
A Shift	75	0	0	8
B Shift	67	0	6	2
C Shift	71	0	2	1
Total Admissions / Releases for 3/3/2009 (3 detail records)			8	11
<b>Wednesday, March 04, 2009</b>				
A Shift	72	0	2	3
B Shift	71	0	7	4
C Shift	74	0	1	3
Total Admissions / Releases for 3/4/2009 (3 detail records)			10	10
<b>Thursday, March 05, 2009</b>				
A Shift	72	0	1	2
B Shift	71	0	5	3
C Shift	73	0	0	2
Total Admissions / Releases for 3/5/2009 (3 detail records)			6	7
<b>Friday, March 06, 2009</b>				
A Shift	71	0	0	4
B Shift	67	0	5	7
C Shift	65	0	2	0
Total Admissions / Releases for 3/6/2009 (3 detail records)			7	11
<b>Saturday, March 07, 2009</b>				
A Shift	67	0	0	2
B Shift	65	0	1	1
C Shift	65	0	1	0

**Monday, April 20, 2009**

**Page 1 of 5**

Total Admissions / Releases for 3/7/2009 (3 detail records)			2	3
<b>Sunday, March 08, 2009</b>				
A Shift	66	0	1	2
B Shift	65	0	2	5
C Shift	62	0	2	2
Total Admissions / Releases for 3/8/2009 (3 detail records)			5	9
<b>Monday, March 09, 2009</b>				
A Shift	62	0	1	1
B Shift	62	0	3	3
C Shift	62	0	2	3
Total Admissions / Releases for 3/9/2009 (3 detail records)			6	7
<b>Tuesday, March 10, 2009</b>				
A Shift	61	0	4	4
B Shift	61	0	4	3
C Shift	62	0	1	4
Total Admissions / Releases for 3/10/2009 (3 detail records)			9	11
<b>Wednesday, March 11, 2009</b>				
A Shift	59	0	1	1
B Shift	59	0	7	8
C Shift	57	1	5	5
Total Admissions / Releases for 3/11/2009 (3 detail records)			13	14
<b>Thursday, March 12, 2009</b>				
A Shift	57	1	3	4
B Shift	56	1	4	1
C Shift	59	1	2	1
Total Admissions / Releases for 3/12/2009 (3 detail records)			9	6
<b>Friday, March 13, 2009</b>				
A Shift	60	1	4	7
B Shift	57	1	7	5
C Shift	59	1	2	0
Total Admissions / Releases for 3/13/2009 (3 detail records)			13	12
<b>Saturday, March 14, 2009</b>				
A Shift	61	1	0	1
B Shift	60	1	2	3
C Shift	59	1	0	0
Total Admissions / Releases for 3/14/2009 (3 detail records)			2	4
<b>Sunday, March 15, 2009</b>				
<b>Monday, April 20, 2009</b>				

**Page 2 of 5**

	A Shift	59	1	1	1
	B Shift	59	1	0	2
	C Shift	57	1	9	0
Total Admissions / Releases for 3/15/2009 (3 detail records)				10	3
Monday, March 16, 2009	<b>Shift</b>	<b>Population</b>	<b>T/R</b>	<b>Admissions</b>	<b>Releases</b>
	A Shift	66	1	2	5
	B Shift	64	0	4	3
	C Shift	65	0	2	3
Total Admissions / Releases for 3/16/2009 (3 detail records)				8	11
Tuesday, March 17, 2009	<b>Shift</b>	<b>Population</b>	<b>T/R</b>	<b>Admissions</b>	<b>Releases</b>
	A Shift	64	0	3	6
	B Shift	61	0	4	9
	C Shift	56	0	2	1
Total Admissions / Releases for 3/17/2009 (3 detail records)				9	16
Wednesday, March 18, 2009	<b>Shift</b>	<b>Population</b>	<b>T/R</b>	<b>Admissions</b>	<b>Releases</b>
	A Shift	57	0	1	1
	B Shift	57	0	6	3
	C Shift	60	0	5	2
Total Admissions / Releases for 3/18/2009 (3 detail records)				12	6
Thursday, March 19, 2009	<b>Shift</b>	<b>Population</b>	<b>T/R</b>	<b>Admissions</b>	<b>Releases</b>
	A Shift	63	0	1	3
	B Shift	61	0	6	3
	C Shift	64	0	2	3
Total Admissions / Releases for 3/19/2009 (3 detail records)				9	9
Friday, March 20, 2009	<b>Shift</b>	<b>Population</b>	<b>T/R</b>	<b>Admissions</b>	<b>Releases</b>
	A Shift	63	0	3	6
	B Shift	60	0	2	4
	C Shift	58	0	0	0
Total Admissions / Releases for 3/20/2009 (3 detail records)				5	10
Saturday, March 21, 2009	<b>Shift</b>	<b>Population</b>	<b>T/R</b>	<b>Admissions</b>	<b>Releases</b>
	A Shift	58	0	2	3
	B Shift	57	0	1	0
	C Shift	58	0	1	0
Total Admissions / Releases for 3/21/2009 (3 detail records)				4	3
Sunday, March 22, 2009	<b>Shift</b>	<b>Population</b>	<b>T/R</b>	<b>Admissions</b>	<b>Releases</b>
	A Shift	59	0	3	3
	B Shift	59	0	5	0
	C Shift	64	0	3	1

Monday, April 20, 2009

Page 3 of 5

Total Admissions / Releases for 3/22/2009 (3 detail records)				11	4
Monday, March 23, 2009	<b>Shift</b>	<b>Population</b>	<b>T/R</b>	<b>Admissions</b>	<b>Releases</b>
	A Shift	66	0	6	1
	B Shift	71	0	4	5
	C Shift	70	0	2	3
Total Admissions / Releases for 3/23/2009 (3 detail records)				12	9
Tuesday, March 24, 2009	<b>Shift</b>	<b>Population</b>	<b>T/R</b>	<b>Admissions</b>	<b>Releases</b>
	A Shift	69	0	1	4
	B Shift	66	0	8	3
	C Shift	71	0	7	0
Total Admissions / Releases for 3/24/2009 (3 detail records)				16	7
Wednesday, March 25, 2009	<b>Shift</b>	<b>Population</b>	<b>T/R</b>	<b>Admissions</b>	<b>Releases</b>
	A Shift	78	0	1	1
	B Shift	78	0	6	10
	C Shift	74	0	2	0
Total Admissions / Releases for 3/25/2009 (3 detail records)				9	11
Thursday, March 26, 2009	<b>Shift</b>	<b>Population</b>	<b>T/R</b>	<b>Admissions</b>	<b>Releases</b>
	A Shift	76	0	1	3
	B Shift	74	0	3	2
	C Shift	75	0	2	0
Total Admissions / Releases for 3/26/2009 (3 detail records)				6	5
Friday, March 27, 2009	<b>Shift</b>	<b>Population</b>	<b>T/R</b>	<b>Admissions</b>	<b>Releases</b>
	A Shift	77	0	0	1
	B Shift	76	0	4	5
	C Shift	75	0	0	0
Total Admissions / Releases for 3/27/2009 (3 detail records)				4	6
Saturday, March 28, 2009	<b>Shift</b>	<b>Population</b>	<b>T/R</b>	<b>Admissions</b>	<b>Releases</b>
	A Shift	75	0	2	2
	B Shift	75	0	1	0
	C Shift	76	0	0	0
Total Admissions / Releases for 3/28/2009 (3 detail records)				3	2
Sunday, March 29, 2009	<b>Shift</b>	<b>Population</b>	<b>T/R</b>	<b>Admissions</b>	<b>Releases</b>
	A Shift	76	0	2	3
	B Shift	75	0	2	1
	C Shift	76	0	1	1
Total Admissions / Releases for 3/29/2009 (3 detail records)				5	5

Monday, March 30, 2009  
Monday, April 20, 2009

Page 4 of 5



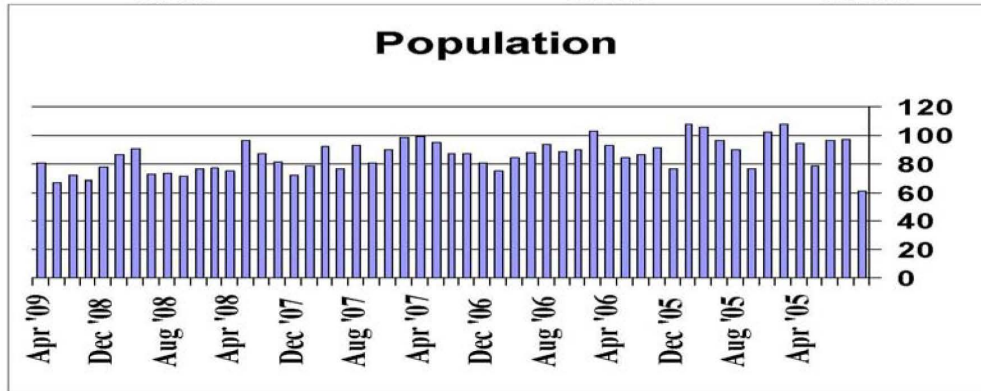
A Shift	76	0	1	3
B Shift	74	0	2	0
C Shift	76	0	0	5
Total Admissions / Releases for 3/30/2009 (3 detail records)			3	8

Tuesday, March 31, 2009					
<u>Shift</u>	<u>Population</u>	<u>T/R</u>	<u>Admissions</u>	<u>Releases</u>	
A Shift	71	0	3	4	
B Shift	70	0	4	5	
C Shift	69	0	0	3	
Total Admissions / Releases for 3/31/2009 (3 detail records)			7	12	

**Average Population:** 66.62  
**Per Shift:** 0.15  
**66.77**

**Total Admissions:** 233  
**Average Admissions:** 2.5054  
**Per Shift:**

**Total Releases:** 243  
**Average Releases:** 2.61290  
**Per Shift:**



Monday, April 20, 2009

Page 5 of 5



**Palm Beach Regional Juvenile Detention Center**  
**Population Statistical Report**  
**4/1/2009 Through 4/30/2009**

Wednesday, April 01, 2009					
<u>Shift</u>	<u>Population</u>	<u>T/R</u>	<u>Admissions</u>	<u>Releases</u>	
A Shift	66	0	9	1	
B Shift	74	0	4	2	
C Shift	75	1	4	3	
Total Admissions / Releases for 4/1/2009 (3 detail records)			17	6	
Thursday, April 02, 2009					
<u>Shift</u>	<u>Population</u>	<u>T/R</u>	<u>Admissions</u>	<u>Releases</u>	
A Shift	77	0	3	5	
B Shift	75	0	4	3	
C Shift	75	1	2	1	
Total Admissions / Releases for 4/2/2009 (3 detail records)			9	9	
Friday, April 03, 2009					
<u>Shift</u>	<u>Population</u>	<u>T/R</u>	<u>Admissions</u>	<u>Releases</u>	
A Shift	77	0	2	5	
B Shift	73	1	2	7	
C Shift	68	1	4	3	
Total Admissions / Releases for 4/3/2009 (3 detail records)			8	15	
Saturday, April 04, 2009					
<u>Shift</u>	<u>Population</u>	<u>T/R</u>	<u>Admissions</u>	<u>Releases</u>	
A Shift	69	1	4	2	
B Shift	72	0	5	2	
C Shift	75	0	2	0	
Total Admissions / Releases for 4/4/2009 (3 detail records)			11	4	
Sunday, April 05, 2009					
<u>Shift</u>	<u>Population</u>	<u>T/R</u>	<u>Admissions</u>	<u>Releases</u>	
A Shift	77	0	0	3	
B Shift	74	0	1	1	
C Shift	74	0	2	1	
Total Admissions / Releases for 4/5/2009 (3 detail records)			3	5	
Monday, April 06, 2009					
<u>Shift</u>	<u>Population</u>	<u>T/R</u>	<u>Admissions</u>	<u>Releases</u>	
A Shift	75	0	5	2	
B Shift	78	0	4	1	
C Shift	81	0	2	2	
Total Admissions / Releases for 4/6/2009 (3 detail records)			11	5	
Tuesday, April 07, 2009					
<u>Shift</u>	<u>Population</u>	<u>T/R</u>	<u>Admissions</u>	<u>Releases</u>	
A Shift	81	0	1	7	
B Shift	75	0	5	0	
C Shift	80	0	5	1	

Sunday, May 03, 2009

Page 1 of 5



Total Admissions / Releases for 4/7/2009 (3 detail records)				11	8
<b>Wednesday, April 08, 2009</b>	<b>Shift</b>	<b>Population</b>	<b>T/R</b>	<b>Admissions</b>	<b>Releases</b>
	A Shift	84	0	1	4
	B Shift	81		5	5
	C Shift	80	1	4	0
Total Admissions / Releases for 4/8/2009 (3 detail records)				10	9
<b>Thursday, April 09, 2009</b>	<b>Shift</b>	<b>Population</b>	<b>T/R</b>	<b>Admissions</b>	<b>Releases</b>
	A Shift	85	0	3	2
	B Shift	86	0	4	4
	C Shift	85	1	6	1
Total Admissions / Releases for 4/9/2009 (3 detail records)				13	7
<b>Friday, April 10, 2009</b>	<b>Shift</b>	<b>Population</b>	<b>T/R</b>	<b>Admissions</b>	<b>Releases</b>
	A Shift	91	0	2	6
	B Shift	87	0	2	4
	C Shift	85	0	2	0
Total Admissions / Releases for 4/10/2009 (3 detail records)				6	10
<b>Saturday, April 11, 2009</b>	<b>Shift</b>	<b>Population</b>	<b>T/R</b>	<b>Admissions</b>	<b>Releases</b>
	A Shift	87	0	4	3
	B Shift	88	0	1	0
	C Shift	89	0	2	0
Total Admissions / Releases for 4/11/2009 (3 detail records)				7	3
<b>Sunday, April 12, 2009</b>	<b>Shift</b>	<b>Population</b>	<b>T/R</b>	<b>Admissions</b>	<b>Releases</b>
	A Shift	91	0	2	1
	B Shift	92	0	1	0
	C Shift	93	0	2	1
Total Admissions / Releases for 4/12/2009 (3 detail records)				5	2
<b>Monday, April 13, 2009</b>	<b>Shift</b>	<b>Population</b>	<b>T/R</b>	<b>Admissions</b>	<b>Releases</b>
	A Shift	94	0	0	1
	B Shift	93	0	4	2
	C Shift	95	0	4	0
Total Admissions / Releases for 4/13/2009 (3 detail records)				8	3
<b>Tuesday, April 14, 2009</b>	<b>Shift</b>	<b>Population</b>	<b>T/R</b>	<b>Admissions</b>	<b>Releases</b>
	A Shift	99	0	1	8
	B Shift	92	0	1	14
	C Shift	79	0	3	0
Total Admissions / Releases for 4/14/2009 (3 detail records)				5	22
<b>Wednesday, April 15, 2009</b>	<b>Shift</b>	<b>Population</b>	<b>T/R</b>	<b>Admissions</b>	<b>Releases</b>
<b>Sunday, May 03, 2009</b>					
	A Shift	82	0	3	4
	B Shift	81	0	8	10
	C Shift	79	0	0	3
Total Admissions / Releases for 4/15/2009 (3 detail records)				11	17
<b>Thursday, April 16, 2009</b>	<b>Shift</b>	<b>Population</b>	<b>T/R</b>	<b>Admissions</b>	<b>Releases</b>
	A Shift	76	0	1	1
	B Shift	76	0	7	5
	C Shift	78	0	1	1
Total Admissions / Releases for 4/16/2009 (3 detail records)				9	7
<b>Friday, April 17, 2009</b>	<b>Shift</b>	<b>Population</b>	<b>T/R</b>	<b>Admissions</b>	<b>Releases</b>
	A Shift	78	0	1	4
	B Shift	75	0	3	3
	C Shift	75	0	2	0
Total Admissions / Releases for 4/17/2009 (3 detail records)				6	7
<b>Saturday, April 18, 2009</b>	<b>Shift</b>	<b>Population</b>	<b>T/R</b>	<b>Admissions</b>	<b>Releases</b>
	A Shift	77	0	1	2
	B Shift	76	0	2	2
	C Shift	76	0	1	0
Total Admissions / Releases for 4/18/2009 (3 detail records)				4	4
<b>Sunday, April 19, 2009</b>	<b>Shift</b>	<b>Population</b>	<b>T/R</b>	<b>Admissions</b>	<b>Releases</b>
	A Shift	77	0	0	1
	B Shift	76	0	0	0
	C Shift	76	0	3	0
Total Admissions / Releases for 4/19/2009 (3 detail records)				3	1
<b>Monday, April 20, 2009</b>	<b>Shift</b>	<b>Population</b>	<b>T/R</b>	<b>Admissions</b>	<b>Releases</b>
	A Shift	79	0	1	4
	B Shift	76	0	3	4
	C Shift	73	2	2	0
Total Admissions / Releases for 4/20/2009 (3 detail records)				6	8
<b>Tuesday, April 21, 2009</b>	<b>Shift</b>	<b>Population</b>	<b>T/R</b>	<b>Admissions</b>	<b>Releases</b>
	A Shift	75	2	3	8
	B Shift	71	1	7	5
	C Shift	73	1	1	7
Total Admissions / Releases for 4/21/2009 (3 detail records)				11	20
<b>Wednesday, April 22, 2009</b>	<b>Shift</b>	<b>Population</b>	<b>T/R</b>	<b>Admissions</b>	<b>Releases</b>
	A Shift	67	1	0	6
	B Shift	62	0	2	7
	C Shift	57	0	4	4
Total Admissions / Releases for 4/22/2009 (3 detail records)					
<b>Sunday, May 03, 2009</b>					

Page 2 of 5

Page 3 of 5

Total Admissions / Releases for 4/22/2009 (3 detail records)				6	17
Thursday, April 23, 2009	<b>Shift</b>	<b>Population</b>	<b>T/R</b>	<b>Admissions</b>	<b>Releases</b>
	A Shift	57	0	0	2
	B Shift	55	0	2	4
	C Shift	53	0	3	2
Total Admissions / Releases for 4/23/2009 (3 detail records)				5	8
Friday, April 24, 2009	<b>Shift</b>	<b>Population</b>	<b>T/R</b>	<b>Admissions</b>	<b>Releases</b>
	A Shift	54	0	2	5
	A Shift	51	0	6	3
	C Shift	54	0	3	0
Total Admissions / Releases for 4/24/2009 (3 detail records)				11	8
Saturday, April 25, 2009	<b>Shift</b>	<b>Population</b>	<b>T/R</b>	<b>Admissions</b>	<b>Releases</b>
	A Shift	57	0	1	1
	B Shift	57	0	2	1
	C Shift	58	0	0	0
Total Admissions / Releases for 4/25/2009 (3 detail records)				3	2
Sunday, April 26, 2009	<b>Shift</b>	<b>Population</b>	<b>T/R</b>	<b>Admissions</b>	<b>Releases</b>
	A Shift	58	0	0	2
	B Shift	56	0	4	0
	C Shift	60	0	3	0
Total Admissions / Releases for 4/26/2009 (3 detail records)				7	2
Monday, April 27, 2009	<b>Shift</b>	<b>Population</b>	<b>T/R</b>	<b>Admissions</b>	<b>Releases</b>
	A Shift	63	0	1	1
	B Shift	63	0	2	7
	C Shift	58	0	2	4
Total Admissions / Releases for 4/27/2009 (3 detail records)				5	12
Tuesday, April 28, 2009	<b>Shift</b>	<b>Population</b>	<b>T/R</b>	<b>Admissions</b>	<b>Releases</b>
	A Shift	56	0	3	4
	B Shift	55	0	8	8
	C Shift	55	0	3	3
Total Admissions / Releases for 4/28/2009 (3 detail records)				14	15
Wednesday, April 29, 2009	<b>Shift</b>	<b>Population</b>	<b>T/R</b>	<b>Admissions</b>	<b>Releases</b>
	A Shift	55	0	3	2
	B Shift	56	0	8	6
	C Shift	58	0	4	2
Total Admissions / Releases for 4/29/2009 (3 detail records)				15	10
Thursday, April 30, 2009	<b>Shift</b>	<b>Population</b>	<b>T/R</b>	<b>Admissions</b>	<b>Releases</b>
Sunday, May 03, 2009	<b>Shift</b>	<b>Population</b>	<b>T/R</b>	<b>Admissions</b>	<b>Releases</b>
	A Shift	60	0	2	3
	B Shift	59	0	7	9
	C Shift	57	0	3	1
Total Admissions / Releases for 4/30/2009 (3 detail records)				12	13

Average Population: 73.14				Total Admissions: 252		Total Releases: 289	
0.16				Average Admissions: 2.8		Average Releases: 2.87778	
Per Shift 73.38				Per Shift		Per Shift	

