



---

## PALM BEACH COUNTY CRIMINAL JUSTICE COMMISSION

### CORRECTIONS TASK FORCE/ Public Safety Coordinating Council

Palm Beach County Governmental Center  
301 N. Olive Avenue, 12<sup>th</sup> Floor McEaddy Conference Room  
West Palm Beach, Florida 33401

Wednesday, February 4, 2009; 12:00 P.M.

### **-SUMMARY MEETING MINUTES-**

#### **MEMBERS PRESENT:**

**Chairman Douglas Duncan**, Roth and Duncan, P.A.  
**Bob Bozzone**, Executive Director, Comprehensive Alcohol Rehabilitation Program  
**Patrick Cannan**, Workforce Alliance  
**Chris Kneisley**, Major, Palm Beach Sheriff's Office  
**Nancy Perez\***, Judge, County Court Criminal Division (*\*via video conference*)  
**Tommy Richards**, Palm Beach County Bail Bond Association  
**Alton Taylor**, Executive Director, Drug Abuse Foundation  
**Charlie Trotta**, Manager, Palm Beach County Pretrial Services Agency  
**Shelley Vana**, Commissioner, Palm Beach County

#### **MEMBERS ABSENT:**

**Rosalyn Baker**, Florida Department of Corrections  
**Maureen F. Brickous**, County Probation, PRIDE Integrated Services, Inc.  
**Roger M. Crane**, Police Chief, Palm Beach County Chiefs of Police Association  
**Gene Thompson**, Chaplain, Palm Beach Sheriff's Office  
**Louis Tomeo**, Office of the Clerk and Comptroller, Director Criminal Court Services  
**Barbara White**, Public Defender's Office

#### **GUESTS PRESENT:**

**Anthony Flowers**, Superintendent, Dept. of Juvenile Justice  
**Barry Fondiller**, Jail Counselor, Palm Beach Sheriff's Office  
**Gwen Freitas**, Public citizen  
**Shelby King**, Palm Beach County Sheriff's Office  
**Bea Lovelace**, Office of the Clerk and Comptroller  
**Michelle Spangenberg**, Criminal Court Manager, Court Administration  
**Tammy Waldrop**, Palm Beach County Sheriff's Office

#### **CJC STAFF PRESENT:**

**Damir Kukec**, Research and Planning Manager  
**Jenise Link**, Sr. Criminal Justice Analyst  
**Michael Rodriguez**, Executive Director  
**Kristie Slinsky**, Intern

- I. Major Kneisley called for the agenda approval. The agenda was approved without additions or deletions.
- II. The minutes of the January 7, meeting of the CTF/PSCC were approved.
- III. Chairman Duncan welcomed the members and guests of the Task Force. Judge Krista Marx and Chief Assistant State Attorney Alan Johnson were thanked for their dedicated service as members on the Public Safety Coordinating Council and Corrections Task Force.
- IV. Reports

**A. Jail Population Report**

Major Kneisley reported that the total population today of the jail is 2,877 which he noted represents a downward trend.

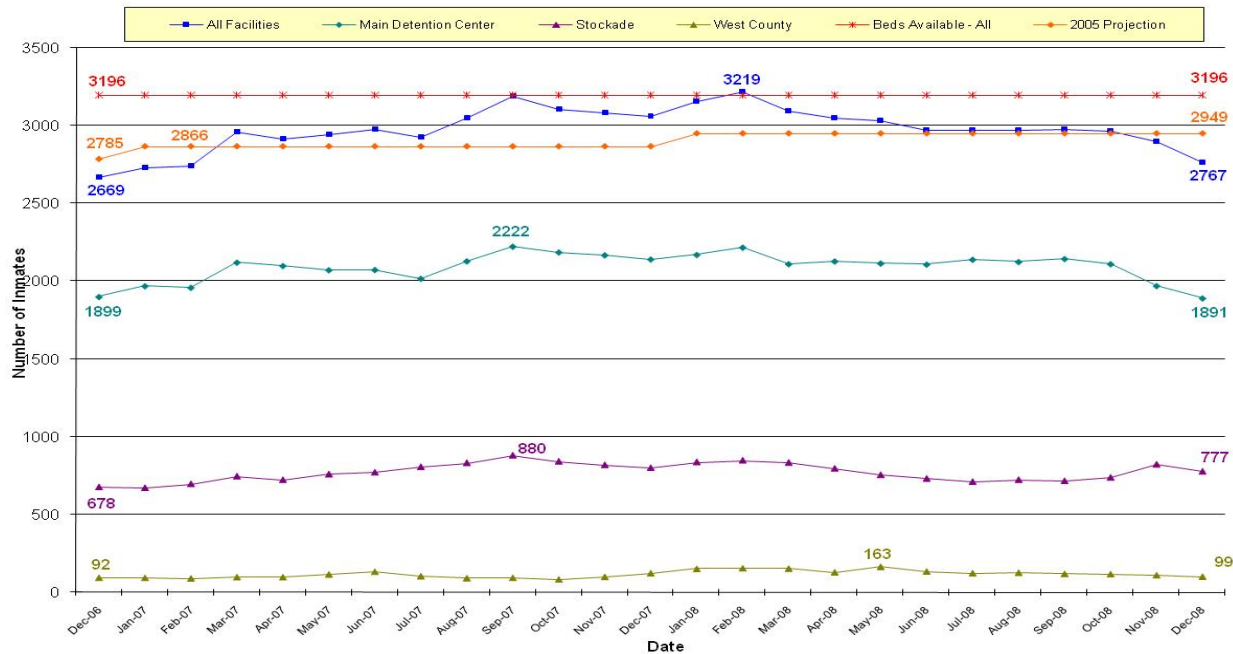
See Charts/graphs following:

Palm Beach County Criminal Justice Commission  
 Corrections Task Force/Public Safety Coordinating Council  
**Palm Beach County Correctional Facilities Monthly Population Report**  
 January - December 2008  
 Data Source: Palm Beach County Sheriff's Office, Corrections Department

Facility	December Average Daily Population	Jan - Dec Average Daily Population	EXISTING CAPACITY			FUTURE CAPACITY	
			Number Beds*	December Percent Occupied (ADP/Capacity)	Jan - Dec Percent Occupied (ADP/Capacity)	Number Beds*	Jan - Dec Percent Occupied (ADP/Capacity)
Main Detention Center	1,891	2,102	2,114	89%	99%	2,114	99%
Stockade Detention Center (Including 96 bed Drug Farm)	777	774	944	82%	82%	944	82%
West County Detention Center	99	131	138	72%	95%	262	50%
<b>COUNTYWIDE TOTAL</b>	<b>2,767</b>	<b>3,007</b>	<b>3,196</b>	<b>87%</b>	<b>94%</b>	<b>3,320</b>	<b>91%</b>

\*Does not include 106 beds for medical.

Palm Beach County Criminal Justice Commission  
 Corrections Task Force/Public Safety Coordinating Council  
**Average Daily Populations by Date and Facility**  
 Data Source: Palm Beach County Sheriff's Office, Corrections Department



**B. Jail Counselor Report**

The Jail Counselor, Mr. Fondiller, provided a report that showed the status of DCF transfers, misdemeanor booking averages, and a table of the January misdemeanor bookings. Mr. Fondiller reported that the total average of days misdemeanants spent in jail in January was 4.85 days. The average number of days for misdemeanants between booking and sentencing was 5.9 and the mean average was approximately 53.5 days for the month of January. This number does not include the 70% of persons that come in and out within the first day.

Members discussed the increase in the average number of days for misdemeanors and noted that they seemed much higher than anticipated. Mr. Fondiller stated that he would check the data for this report. Mr. Rodriguez also asked that the CJC Research and Planning Manager compile a comparative report to the Jail Counselor's report.

**C. Juvenile Detention Report**

Department of Juvenile Justice Superintendent, Anthony Flowers supplied a report that showed the average population of the juvenile detention center in January was down to 69 which was the lowest population in the month of January in the past five years. (A copy of the full report is attached to the end of the minutes). He added that the Palm Beach County Detention center has five vacancies and noted that the department is currently under a hiring freeze.

---

## **D. Pretrial Services Report**

The Pretrial Service Manager, Mr. Trotta, provided members with a printed report detailing the Supervised Release Pretrial Services Program. The report notes that it is current as of February 2<sup>nd</sup>. He stated that there are a total of 1,445 defendants on Supervised Own Recognizance (S.O.R.) and that 1,113 of these are out of custody and are not occupying jail space. He further reported that there are a total of 641 defendants on S.O.R. only and 804 that have a money bond attached to the S.O.R. Members asked for the breakdown of the cases of individuals that are on S.O.R. and are awaiting placement to treatment. There were 8 cases listed on the current report.

## **V. New Business**

### **Nominations for Corrections Task Force Vice-Chair**

This issue was tabled until the next monthly meeting.

## **VI. Old Business**

### **A. Potential Legislation affecting county jail population**

The Task Force members discussed an analysis from the Sheriff's office regarding the potential budget cut that would transfer commitments at the Jimmy Ryce facility in Florida to county jails. Major Kneisley reported that this transfer would require specific jail space and estimated an annual operating cost of \$4 million in addition to an initial start-up capital cost of \$4 million for a 24-bed facility for these long term civil commitments. Ms. Spangenberg reported that there are 13 persons at the Jimmy Ryce facility that are from Palm Beach County. Major Kneisley reported that there has not been any new notices regarding the possible legislation that would change the structure of county jail sentence time frames beyond one year. The Task Force is continuing to monitor any legislation in reference to these issues.

### **B. Alternatives to Incarceration**

Chairman Duncan reported that the Alternatives to Incarceration Advisory Board met on January 28, 2009 to review a program for day reporting requirements paper and to discuss the approach for such a day reporting center. The Board voted to remove the pretrial population from the requirements and decided to focus on the sentenced offender population. The Board directed CJC staff to develop a proposal for a day reporting center program to present to possible implementing agencies.

## **VII. Additional Member and guest comments**

Mr. Bozzone asked if the task force could research the issue of the inmate placements to treatment. Mr. Taylor mentioned that a planning committee has been working on a judges educational segment regarding ordering assessments. Mr. Fondiller noted that sometimes an inmate does not receive a Substance Abuse Awareness program (SAAP) assessment but a placement directly to one of the centers such as the Gratitude House. Members discussed the process of placing individuals into treatment. Commissioner Vana and Mr. Taylor discussed a procedure that would be automatic in getting an individual his/her assessment then direct placement. Judge Perez stated that an option would be for the Chief Judge to recommend the judges follow a drafted procedure for this. Chairman Duncan asked that staff invite Mr. Gillert from SAAP to the next monthly meeting to assist the task force in mapping out what the current process is for assessment and treatment placement.

ADJOURN. JL, CJC 2/4/09

Attached report from Department of Juvenile Justice:



**Palm Beach Regional Juvenile Detention Center  
Population Statistical Report  
1/1/2009 Through 1/31/2009**

Thursday, January 01, 2009	<u>Shift</u>	<u>Population</u>	<u>T/R</u>	<u>Admissions</u>	<u>Releases</u>
	A Shift	69	0	1	1
	B Shift	69	0	2	0
	C Shift	71	0	0	0
Total Admissions / Releases for 1/1/2009 (3 detail records)				3	1
Friday, January 02, 2009	<u>Shift</u>	<u>Population</u>	<u>T/R</u>	<u>Admissions</u>	<u>Releases</u>
	A Shift	71	0	1	2
	B Shift	70	0	4	1
	C Shift	73	0	1	0
Total Admissions / Releases for 1/2/2009 (3 detail records)				6	3
Saturday, January 03, 2009	<u>Shift</u>	<u>Population</u>	<u>T/R</u>	<u>Admissions</u>	<u>Releases</u>
	A Shift	74	0	1	2
	B Shift	73	0	2	0
	C Shift	75	0	1	0
Total Admissions / Releases for 1/3/2009 (3 detail records)				4	2
Sunday, January 04, 2009	<u>Shift</u>	<u>Population</u>	<u>T/R</u>	<u>Admissions</u>	<u>Releases</u>
	A Shift	76	0	0	0
	B Shift	76	0	0	0
	C Shift	76	0	6	0
Total Admissions / Releases for 1/4/2009 (3 detail records)				6	0
Monday, January 05, 2009	<u>Shift</u>	<u>Population</u>	<u>T/R</u>	<u>Admissions</u>	<u>Releases</u>
	A Shift	82	0	4	3
	B Shift	83	0	2	6
	C Shift	79	0	2	4
Total Admissions / Releases for 1/5/2009 (3 detail records)				8	13
Tuesday, January 06, 2009	<u>Shift</u>	<u>Population</u>	<u>T/R</u>	<u>Admissions</u>	<u>Releases</u>
	A Shift	77	0	3	4
	B Shift	76	0	8	4
	C Shift	80	0	5	3
Total Admissions / Releases for 1/6/2009 (3 detail records)				16	11
Wednesday, January 07, 2009	<u>Shift</u>	<u>Population</u>	<u>T/R</u>	<u>Admissions</u>	<u>Releases</u>
	A Shift	82	0	1	5
	B Shift	78	0	7	11
	C Shift	74	0	4	3

Monday, February 02, 2009

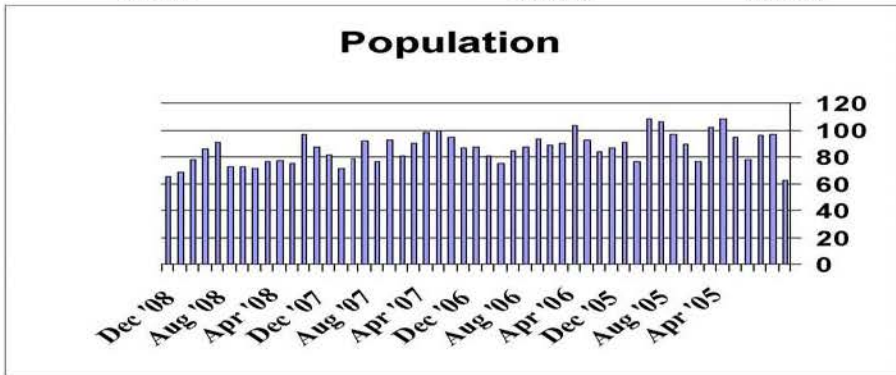
Page 1 of 5

Total Admissions / Releases for 1/7/2009 (3 detail records)					12	19
<b>Thursday, January 08, 2009</b>	<b>Shift</b>	<b>Population</b>	<b>T/R</b>	<b>Admissions</b>	<b>Releases</b>	
	A Shift	75	0	1	4	
	B Shift	72	0	4	5	
	C Shift	71	0	6	1	
Total Admissions / Releases for 1/8/2009 (3 detail records)					11	10
<b>Friday, January 09, 2009</b>	<b>Shift</b>	<b>Population</b>	<b>T/R</b>	<b>Admissions</b>	<b>Releases</b>	
	A Shift	76	0	4	4	
	B Shift	75	1	3	8	
	C Shift	71	0	2	1	
Total Admissions / Releases for 1/9/2009 (3 detail records)					9	13
<b>Saturday, January 10, 2009</b>	<b>Shift</b>	<b>Population</b>	<b>T/R</b>	<b>Admissions</b>	<b>Releases</b>	
	A Shift	72	0	0	3	
	B Shift	69	0	2	0	
	C Shift	71	0	1	0	
Total Admissions / Releases for 1/10/2009 (3 detail records)					3	3
<b>Sunday, January 11, 2009</b>	<b>Shift</b>	<b>Population</b>	<b>T/R</b>	<b>Admissions</b>	<b>Releases</b>	
	A Shift	72	0	1	3	
	B Shift	70	0	2	0	
	C Shift	72	0	1	5	
Total Admissions / Releases for 1/11/2009 (3 detail records)					4	8
<b>Monday, January 12, 2009</b>	<b>Shift</b>	<b>Population</b>	<b>T/R</b>	<b>Admissions</b>	<b>Releases</b>	
	A Shift	68	0	2	1	
	B Shift	69	0	5	2	
	C Shift	72	0	3	3	
Total Admissions / Releases for 1/12/2009 (3 detail records)					10	6
<b>Tuesday, January 13, 2009</b>	<b>Shift</b>	<b>Population</b>	<b>T/R</b>	<b>Admissions</b>	<b>Releases</b>	
	A Shift	72	0	0	4	
	B Shift	68	0	6	6	
	C Shift	68	0	3	1	
Total Admissions / Releases for 1/13/2009 (3 detail records)					9	11
<b>Wednesday, January 14, 2009</b>	<b>Shift</b>	<b>Population</b>	<b>T/R</b>	<b>Admissions</b>	<b>Releases</b>	
	A Shift	70	0	0	5	
	B Shift	65	0	4	4	
	C Shift	65	0	0	2	
Total Admissions / Releases for 1/14/2009 (3 detail records)					4	11
<b>Thursday, January 15, 2009</b>	<b>Shift</b>	<b>Population</b>	<b>T/R</b>	<b>Admissions</b>	<b>Releases</b>	
<b>Monday, February 02, 2009</b>					<b>Page 2 of 5</b>	
	A Shift	63	0	1	3	
	B Shift	61	0	5	1	
	C Shift	65	0	3	0	
Total Admissions / Releases for 1/15/2009 (3 detail records)					9	4
<b>Friday, January 16, 2009</b>	<b>Shift</b>	<b>Population</b>	<b>T/R</b>	<b>Admissions</b>	<b>Releases</b>	
	A Shift	68	0	2	8	
	B Shift	62	0	4	2	
	C Shift	64	0	1	0	
Total Admissions / Releases for 1/16/2009 (3 detail records)					7	10
<b>Saturday, January 17, 2009</b>	<b>Shift</b>	<b>Population</b>	<b>T/R</b>	<b>Admissions</b>	<b>Releases</b>	
	A Shift	65	0	2	1	
	B Shift	66	0	3	1	
	C Shift	68	0	2	0	
Total Admissions / Releases for 1/17/2009 (3 detail records)					7	2
<b>Sunday, January 18, 2009</b>	<b>Shift</b>	<b>Population</b>	<b>T/R</b>	<b>Admissions</b>	<b>Releases</b>	
	A Shift	70	0	1	4	
	B Shift	67	0	1	2	
	C Shift	66	0	2	0	
Total Admissions / Releases for 1/18/2009 (3 detail records)					4	6
<b>Monday, January 19, 2009</b>	<b>Shift</b>	<b>Population</b>	<b>T/R</b>	<b>Admissions</b>	<b>Releases</b>	
	A Shift	68	0	0	4	
	B Shift	64	0	4	1	
	C Shift	67	0	2	1	
Total Admissions / Releases for 1/19/2009 (3 detail records)					6	6
<b>Tuesday, January 20, 2009</b>	<b>Shift</b>	<b>Population</b>	<b>T/R</b>	<b>Admissions</b>	<b>Releases</b>	
	A Shift	68	0	2	3	
	B Shift	67	0	6	5	
	C Shift	68	0	0	0	
Total Admissions / Releases for 1/20/2009 (3 detail records)					8	8
<b>Wednesday, January 21, 2009</b>	<b>Shift</b>	<b>Population</b>	<b>T/R</b>	<b>Admissions</b>	<b>Releases</b>	
	A Shift	68	0	3	2	
	B Shift	69	0	6	10	
	C Shift	64	1	3	2	
Total Admissions / Releases for 1/21/2009 (3 detail records)					12	14
<b>Thursday, January 22, 2009</b>	<b>Shift</b>	<b>Population</b>	<b>T/R</b>	<b>Admissions</b>	<b>Releases</b>	
	A Shift	66	0	1	2	
	B Shift	65	0	5	4	
	C Shift	65	1	1	1	
<b>Monday, February 02, 2009</b>					<b>Page 3 of 5</b>	

Total Admissions / Releases for 1/22/2009 (3 detail records)		7	7		
Friday, January 23, 2009	<b>Shift</b>	<b>Population</b>	<b>T/R</b>	<b>Admissions</b>	<b>Releases</b>
	A Shift	66	0	2	6
	B Shift	62	0	3	3
	C Shift	62	0	1	0
Total Admissions / Releases for 1/23/2009 (3 detail records)		6	9		
Saturday, January 24, 2009	<b>Shift</b>	<b>Population</b>	<b>T/R</b>	<b>Admissions</b>	<b>Releases</b>
	A Shift	62	1	0	1
	B Shift	62	0	0	1
	C Shift	61	0	1	0
Total Admissions / Releases for 1/24/2009 (3 detail records)		1	2		
Sunday, January 25, 2009	<b>Shift</b>	<b>Population</b>	<b>T/R</b>	<b>Admissions</b>	<b>Releases</b>
	A Shift	62	0	1	0
	B Shift	63	0	4	1
	C Shift	66	0	0	2
Total Admissions / Releases for 1/25/2009 (3 detail records)		5	3		
Monday, January 26, 2009	<b>Shift</b>	<b>Population</b>	<b>T/R</b>	<b>Admissions</b>	<b>Releases</b>
	A Shift	64	0	3	3
	B Shift	64	0	2	2
	C Shift	64	0	1	1
Total Admissions / Releases for 1/26/2009 (3 detail records)		6	6		
Tuesday, January 27, 2009	<b>Shift</b>	<b>Population</b>	<b>T/R</b>	<b>Admissions</b>	<b>Releases</b>
	A Shift	64	0	0	1
	B Shift	63	0	7	7
	C Shift	63	0	4	2
Total Admissions / Releases for 1/27/2009 (3 detail records)		11	10		
Wednesday, January 28, 2009	<b>Shift</b>	<b>Population</b>	<b>T/R</b>	<b>Admissions</b>	<b>Releases</b>
	A Shift	65	0	0	1
	B Shift	64	0	4	5
	C Shift	63	0	4	0
Total Admissions / Releases for 1/28/2009 (3 detail records)		8	6		
Thursday, January 29, 2009	<b>Shift</b>	<b>Population</b>	<b>T/R</b>	<b>Admissions</b>	<b>Releases</b>
	A Shift	67	0	1	3
	B Shift	65	0	3	4
	C Shift	63	1	2	1
Total Admissions / Releases for 1/29/2009 (3 detail records)		6	8		
Friday, January 30, 2009	<b>Shift</b>	<b>Population</b>	<b>T/R</b>	<b>Admissions</b>	<b>Releases</b>
Monday, February 02, 2009					

Page 4 of 5

A Shift	65	0	1	4	
B Shift	62	0	4	4	
C Shift	62	0	1	0	
Total Admissions / Releases for 1/30/2009 (3 detail records)		6	8		
Saturday, January 31, 2009	<b>Shift</b>	<b>Population</b>	<b>T/R</b>	<b>Admissions</b>	<b>Releases</b>
	A Shift	63	0	2	0
	B Shift	65	0	1	0
	C Shift	66	0	0	0
Total Admissions / Releases for 1/31/2009 (3 detail records)		3	0		
Average Population: 68.48		Total Admissions: 217		Total Releases: 220	
Per Shift: 68.54		Average Admissions: 2.3333		Average Releases: 2.36559	
		Per Shift		Per Shift	



Monday, February 02, 2009

Page 5 of 5